

School Evaluation Services

**STANDARD
& POOR'S**



Identifying Top-Performing High Schools

Analytical Methodology

Technical Appendix

*Developed for
America's Best High Schools Project
with
U.S. News and World Report*

Revised – December 2009

Standard & Poor's
School Evaluation Services
55 Water Street
New York, NY 10041
(212) 438-2193
schoolmatters@sandp.com

Overview

This technical guide serves as a companion to the analytical methodology paper, and provides details and analysis of the state test and college-level data used identify top-performing high schools through this method. The data come from the K-12 public education data websites <http://nces.ed.gov/ccd/> and www.SchoolDataDirect.org (an online service of the **State Education Data Center** that is operated by the **Council of Chief State School Officers**). These websites are freely accessible by anyone with access to the Internet and an interest in education.

Table of Contents

Appendix A	Description of State Tests Utilized for Performance Index and Subgroup Proficiency Indices	Page 2
Appendix B	State Test Performance Levels Utilized for Performance Index and Subgroup Proficiency Indices	Page 5
Appendix C	State Test Regression Analyses – Determining which High Schools Exceeded Statistical Expectations	Page 7

Standard & Poor's School Evaluation Services

America's Best High Schools Methodology

Appendix A: Description of State Tests* Utilized for Performance Index and Subgroup Proficiency Indices (*Steps 1 and 2 of Method*)

(States A-K)

State	Test Name	Grade(s) Tested	Graduation Requirement (Beginning Year)
Alabama	Alabama High School Graduation Exam (AHSGE)	Grade 11	2001
Alaska	High School Graduation Qualifying Exam (HSGQE)	Grade 9, 10	2004
Arizona	Arizona's Instrument to Measure Standards (AIMS)	Grade 10	2006
Arkansas	Arkansas Comprehensive Testing, Assessment and Accountability Program - Criterion Reference Tests	Cohort/End-of-Course (Math), Grade 11 (Reading)	2010
California	California High School Exit Exams (CAHSEE)	Cohort/Exit Exam	2006
Colorado	Colorado Student Assessment Program (CSAP)	Grades 9, 10	no
Connecticut	Connecticut Academic Performance Test (CAPT)	Grade 10	no
Delaware	Delaware Student Testing Program (DSTP)	Grade 10	no
Florida	Florida Comprehensive Assessment Test (FCAT)	Grades 9, 10	2003
Georgia	Georgia High School Graduation Tests (GHSGT)	Grade 11	1994
Hawaii	Hawaii Content & Performance Standards (HCPS III) State Assessment	Grade 10	no
Idaho	Idaho Standard Achievement Test (ISAT)	Grade 10	2006
Illinois	Prairie State Achievement Examination (PSAE)	Grade 11	no
Indiana	Indiana Statewide Testing for Educational Progress (ISTEP+); Graduation Qualifying Exams (GQE)	Grades 9, 10	2000
Iowa	Iowa Tests of Educational Development (ITED)	Grade 11	no
Kansas	Kansas Statewide Assessment (KSA)	Grade 11	no
Kentucky	Kentucky Core Content Test (KCCT)	Grade 10 (Reading), Grade 11 (Math)	no

Standard & Poor's School Evaluation Services

America's Best High Schools Methodology

(States L-O)

State	Test Name	Grade(s) Tested	Graduation Requirement (Beginning Year)
Louisiana	Graduation Exit Exam for the 21 st Century (GEE-21)	Cohort/Exit Exam	2003
Maine	Maine High School Assessment (the SAT's)	Grade 11	no
Maryland	High School Assessment (HSA)	Cohort/End-of-Course	2009
Massachusetts	Massachusetts Comprehensive Assessment System (MCAS)	Grade 10	2003
Michigan	Michigan Merit Exam (MME)	Cohort/Exit Exam	no
Minnesota	Graduation Required Assessment for Diploma (GRAD)	Grade 10 (Reading), Grade 11 (Math)	2010
Mississippi	Subject Area Testing Program (SATP)	Cohort/End-of-Course	2006
Missouri	Missouri Assessment Program (MAP)	Grade 10 (Math), Grade 11 (Reading)	no
Montana	Criterion Reference Test (CRI)	Grade 10	no
Nevada	High School Proficiency Exam (HSPE)	Cohort/Exit Exam	2003
New Hampshire	New England Common Assessment Program (NECAP)	Grade 11	no
New Jersey	High School Proficiency Assessment (HSPA)	Cohort/Exit Exam	2003
New Mexico	Standards Based Assessment	Grade 11	2011
New York	Regent's Exams	Cohort/Exit Exam	2000
No. Carolina	End of Course (EOC) Exams	Cohort/End-of-Course	1982
No. Dakota	Standards Based Assessment	Grade 11	no
Ohio	Ohio Graduation Tests (OGT)	Cohort/Exit Exam (Grade 10 reporting)	2007

Standard & Poor's School Evaluation Services

America's Best High Schools Methodology

(States O-W)

State	Test Name	Grade(s) Tested	Graduation Requirement (Beginning Year)
Oregon	Oregon Assessment of Knowledge and Skills (OAKS)	Grade 10	no
Pennsylvania	Pennsylvania System of School Assessment (PSSA)	Grade 11	no
Rhode Island	New England Common Assessment Program (NECAP)	Grade 11	2009
So. Carolina	High School Assessment Program (HSAP)	Cohort/Exit Exam	2006
So. Dakota	Dakota State Testing of Educational Progress (DSTEP)	Grade 11	no
Tennessee	Gateway Examination	Cohort/End-of-Course*	2005
Texas	Texas Assessment of Knowledge and Skills (TAKS)	Grades 9, 10, 11	2005
Utah	Criterion Reference Test (CRI)	Cohort/End-of-Course (Grade 10 R reporting)	no
Vermont	New England Common Assessment Program (NECAP)	Grade 11	no
Virginia	Standards of Learning (SOL) Assessment	Cohort/End-of-Course	2004
Washington	Washington Assessment of Student Learning (WASL)	Grade 10	2008 (Reading) 2013 (Math)
Washington, DC	DC Comprehensive Assessment Program (DC CAS)	Grade 10	no
West Virginia	West Virginia's Educational Standards Test (WESTEST)	Grade 10	no
Wisconsin	Wisconsin Knowledge and Concepts Examinations (WKCE)	Grade 10	no
Wyoming	Proficiency Assessments for Wyoming Students (PAWS)	Grade 11	no

* In the majority of states, the state tests for high school students are “exit exams,” meaning that students must pass them in order to graduate. For those states with exit exams, the year in which the graduation requirement went (or is expected to go) into effect is included in the rightmost column. When grade level specified is “high school,” this indicates that students take these tests either in the grade appropriate to end-of-course exams, or in as many grade levels as necessary in order to pass the tests. In these cases, the data have been reported as cohort data (aggregated over time for the senior class cohort for the 2007-08 school year). In some states, although the exam is given multiple times throughout high school, the results are reported for first-time test takers only, rather than for the cohort. In one case – Tennessee – the data were provided for each grade, without the ability to aggregate into a true cohort, so a virtual cohort was constructed using a cross-section of a single year across all grades 9-12.

Appendix B: State Test Performance Levels Utilized for Performance Index and Subgroup Proficiency Indices

Key: Performance levels highlighted in **bold** represent “proficient” level and higher. Point values are assigned as follows: 1.0 points for scores at the proficient level, +0.5 points for scores at each additional level above the proficient level and -0.5 points for scores at the level that approaches proficient (if applicable).

(States A-M)

State	Range of Potential Performance Index Values	Performance Levels				
		L1	L2	L3	L4	L5
Alaska	0-100*	0		1.0		
Alabama	0-150	0	1.0	1.5		
Arizona	0-150	0	0.5	1.0	1.5	
Arkansas	0-150	0	0.5	1.0	1.5	
California	200-1000#					
Colorado	0-150	0	0.5	1.0	1.5	
Connecticut	0-200	0	0.5	1.0	1.5	2.0
Delaware	0-200	0	0.5	1.0	1.5	2.0
Florida	0-200	0	0.5	1.0	1.5	2.0
Georgia	0-150	0	1.0	1.5		
Hawaii	0-150	0	0.5	1.0	1.5	
Idaho [@]	0-150	0	0.5	1.0	1.5	
Illinois	0-150	0	0.5	1.0	1.5	
Indiana	0-150	0	0.5	1.0	1.5	
Iowa	0-100*	0	1.0			
Kansas	0-200	0	0.5	1.0	1.5	2.0
Kentucky	0-150	0	0.5	1.0	1.5	
Louisiana	0-150	0	0	0.5	1.0	1.5
Maine	0-150	0	0.5	1.0	1.5	
Maryland	0-150	0	1.0	1.5		
Massachusetts	0-150	0	0.5	1.0	1.5	

California does not publicly report performance levels on the CAHSEE, instead reporting results as pass/fail for graduation requirements. In order to perform the risk-adjusted performance analysis, California's Academic Performance Index (API) was substituted for the performance index. While not defined exactly the same as the State Test Performance Index used for other states in this analysis, the API is a reasonable substitute.

* For these states, performance level data were not available for analysis, so proficiency rate data (i.e., the percentage of students at or above proficient) was used instead, resulting in a 0-100 scale. While not as desirable as the performance index, this measure is considered a reasonable substitute.

Standard & Poor's School Evaluation Services

America's Best High Schools Methodology

(States M-W)

State	Range of Potential Performance Index Values	Performance Levels				
		L1	L2	L3	L4	L5
Michigan	0-150	0	0.5	1.0	1.5	
Minnesota	0-150	0	0.5	1.0	1.5	
Mississippi	0-150	0	0.5	1.0	1.5	
Missouri	0-150	0	0.5	1.0	1.5	
Montana [@]	0-150	0	0.5	1.0	1.5	
Nevada	0-150	0	0.5	1.0	1.5	
New Hampshire	0-150	0	0.5	1.0	1.5	
New Jersey	0-150	0	1.0	1.5		
New Mexico	0-150	0	0.5	1.0	1.5	
New York	0-150	0	0.5	1.0	1.5	
North Carolina	0-150	0	0.5	1.0	1.5	
North Dakota	0-150	0	0.5	1.0	1.5	
Ohio	0-100 [*]	0		1.0		
Oregon	0-150	0	0	0.5	1.0	1.5
Pennsylvania	0-150	0	0.5	1.0	1.5	
Rhode Island	0-150	0	0.5	1.0	1.5	
South Carolina	0-150	0	0.5	1.0	1.5	
South Dakota	0-150	0	0.5	1.0	1.5	
Tennessee [@]	0-150	0	1.0	1.5		
Texas	0-150	0	1.0	1.5		
Utah	0-150	0	0.5	1.0	1.5	
Vermont	0-150	0	0.5	1.0	1.5	
Virginia	0-150	0	1.0	1.5		
Washington	0-150	0	0.5	1.0	1.0	1.5
West Virginia [@]	0-200	0	0.5	1.0	1.5	2.0
Wisconsin	0-150	0	0.5	1.0	1.5	
Wyoming	0-150	0	0.5	1.0	1.5	

* For these states, performance level data were not available for analysis, so proficiency rate data (i.e., the percentage of students at or above proficient) was used instead, resulting in a 0-100 scale. While not as desirable as the performance index, this measure is considered a reasonable substitute.

@ For these states, 2007-08 state test data was not available or usable at the time of analysis, and so 2006-07 data were substituted instead. Though not as desirable as the most recent performance year data, this approach was deemed acceptable.

Appendix C: State Test Regression Analyses – Determining which High Schools Exceeded Statistical Expectations

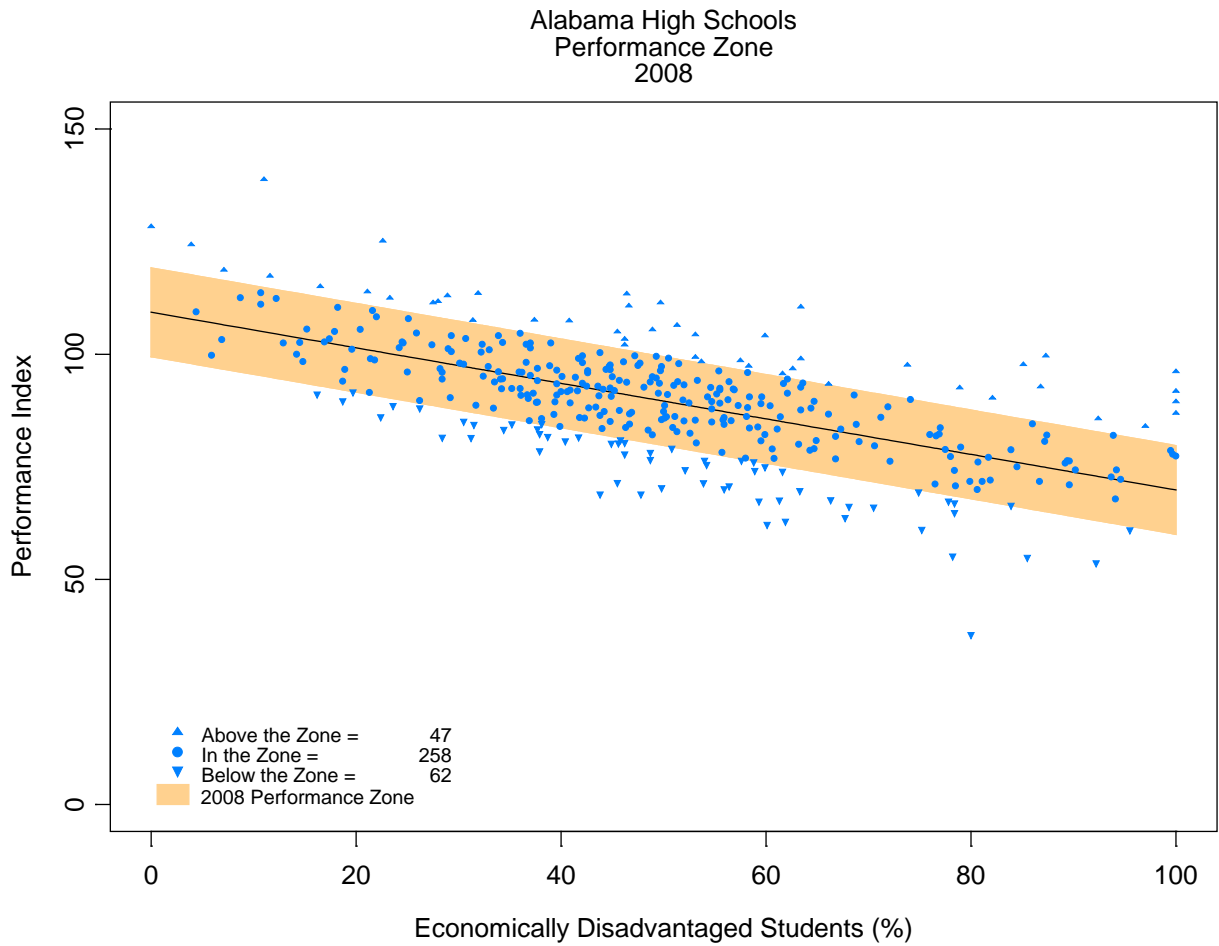
The following pages provide scatterplots for each state analyzed (listed alphabetically), illustrating the statistical relationship between state test performance and student poverty rates, as described in the methodology paper for **step 1**. While some states demonstrate much stronger statistical relationships between these measures than others, all were deemed reasonable for this particular purpose.

Note: for a handful of states, state test data for the 2007-08 school year was not available, and as a result, 2006-07 data were used instead, as noted in the scatterplots that follow.

Alabama

Step 1 Analysis: Actual Performance versus Expected Performance

(Alabama High Schools, 2007-08 School Year)

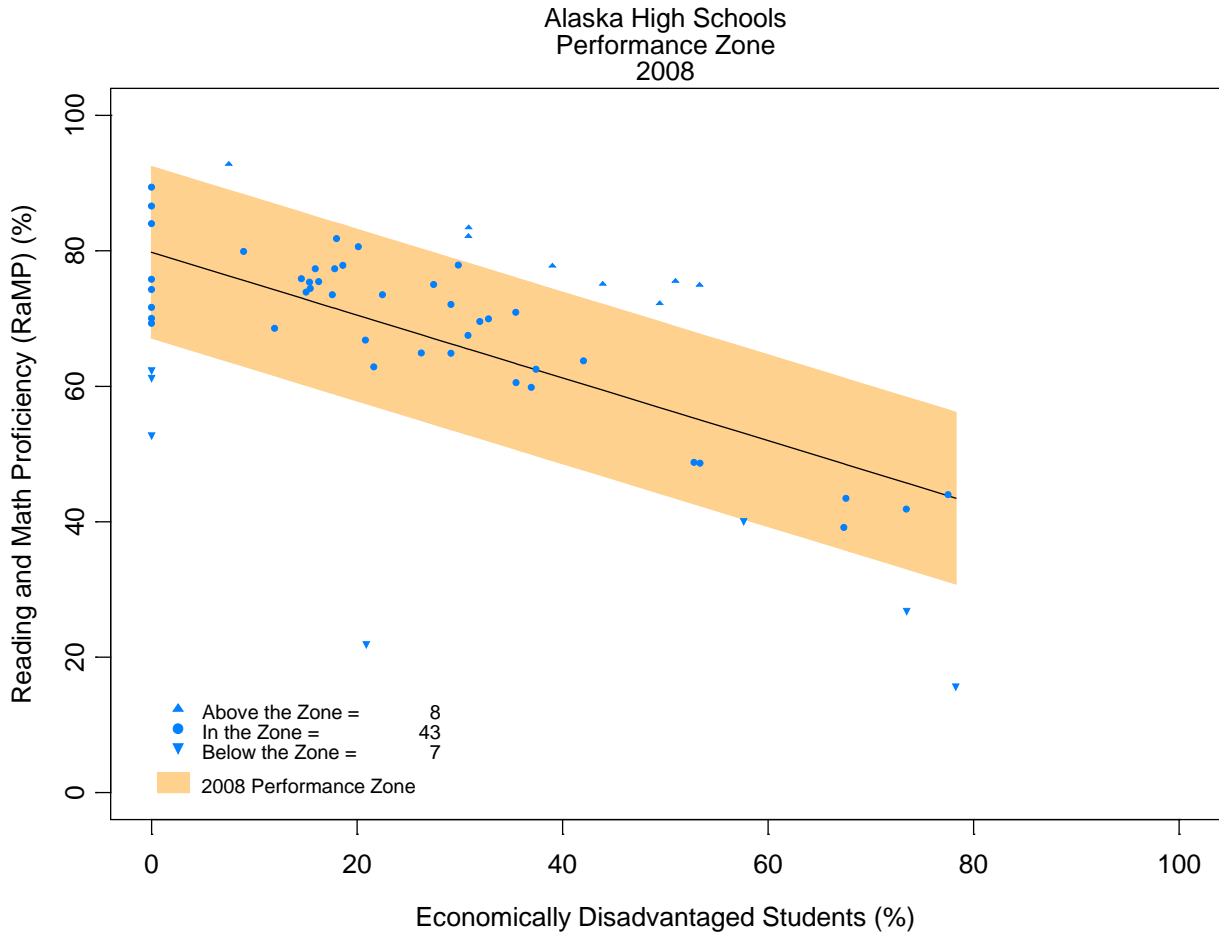


Alabama

Total number of high schools analyzed statewide	367
Number of schools performing above expectations <i>(i.e., meeting Step 1 criteria)</i>	47
Percent of schools meeting criteria	12.8%

Alaska

Step 1 Analysis: Actual Performance versus Expected Performance
(Alaska High Schools, 2007-08 School Year)

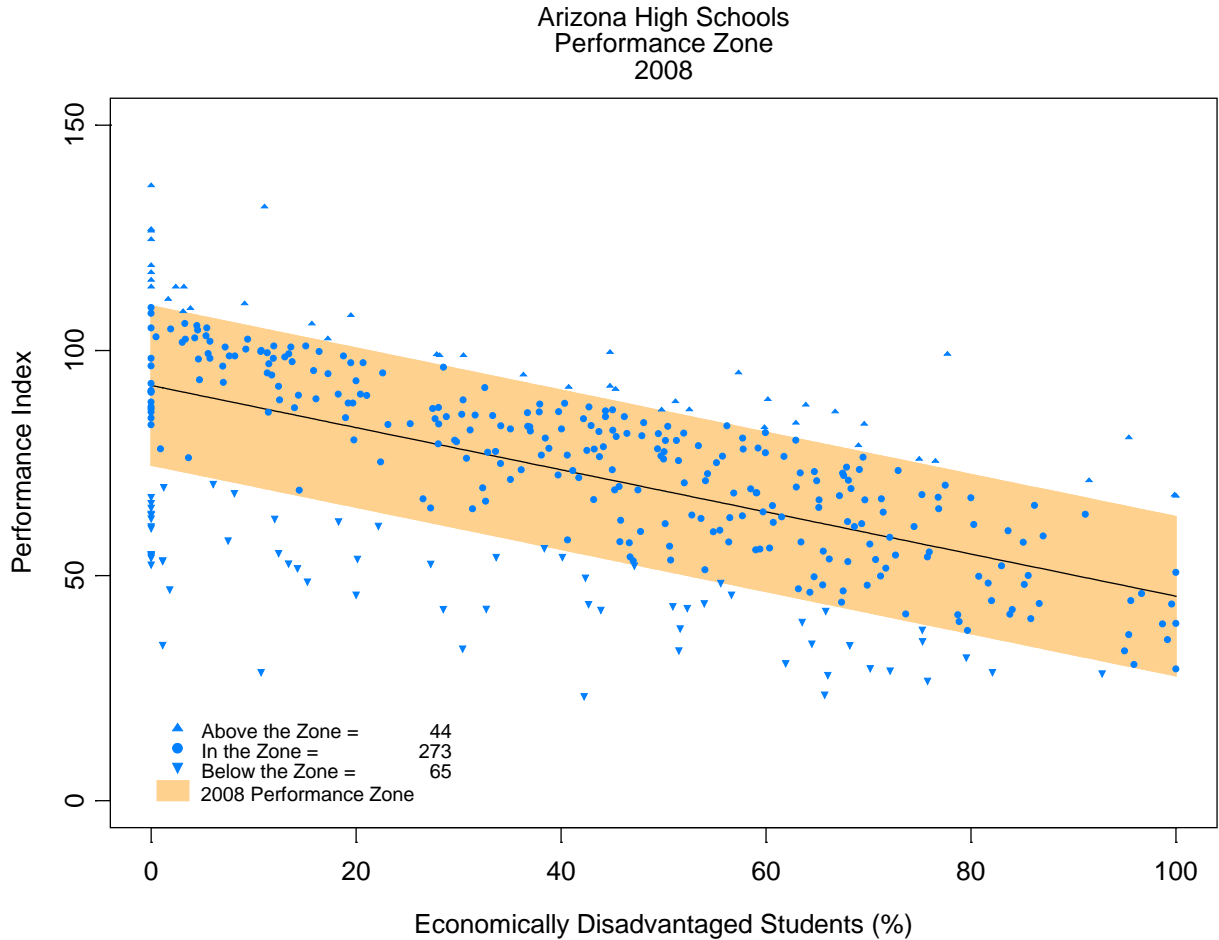


Alaska

Total number of high schools analyzed statewide	58
Number of schools performing above expectations <i>(i.e., meeting Step 1 criteria)</i>	8
Percent of schools meeting criteria	13.8%

Arizona

Step 1 Analysis: Actual Performance versus Expected Performance
(Arizona High Schools, 2007-08 School Year)

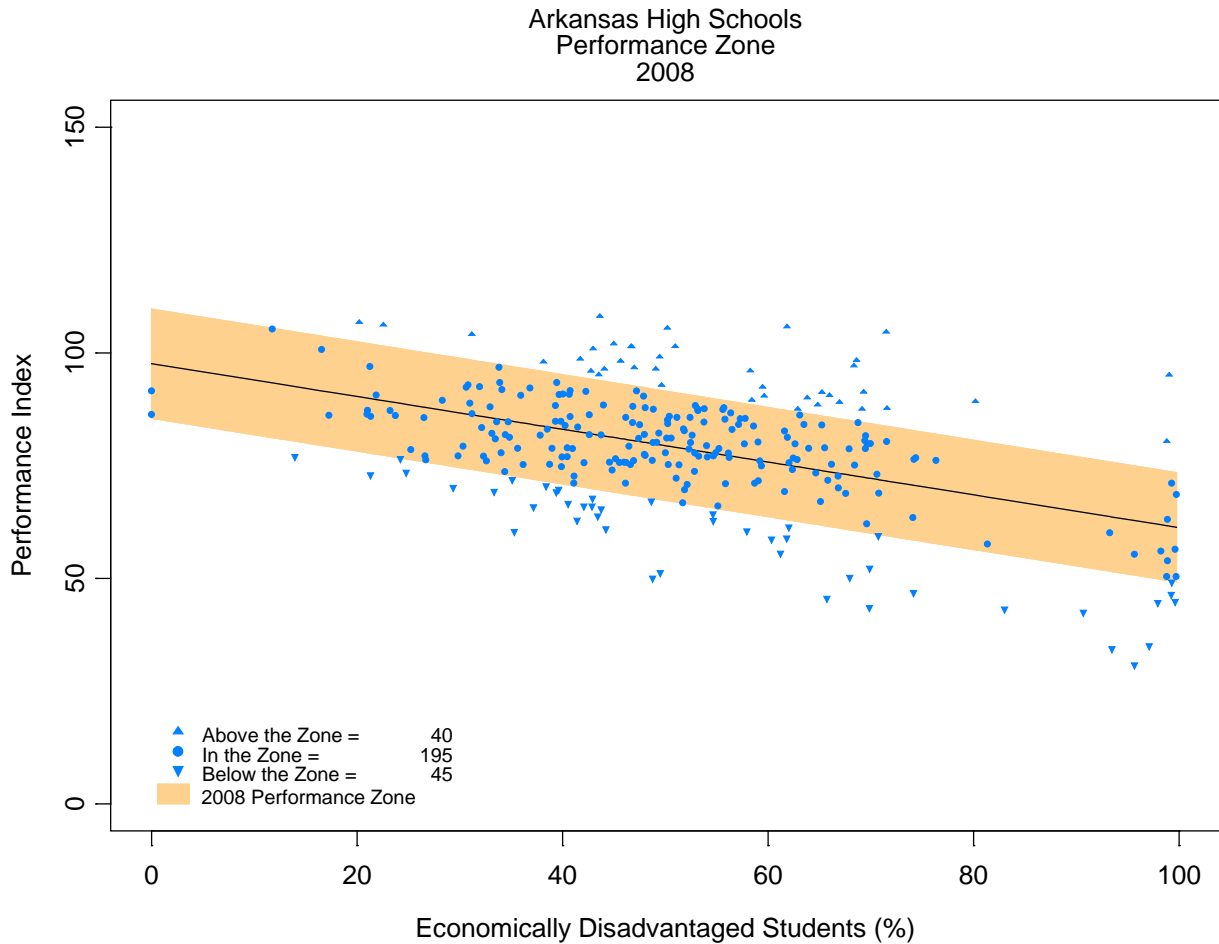


Arizona

Total number of high schools analyzed statewide	382
Number of schools performing above expectations <i>(i.e., meeting Step 1 criteria)</i>	44
Percent of schools meeting criteria	11.5%

Arkansas

Step 1 Analysis: Actual Performance versus Expected Performance
(Arkansas High Schools, 2007-08 School Year)

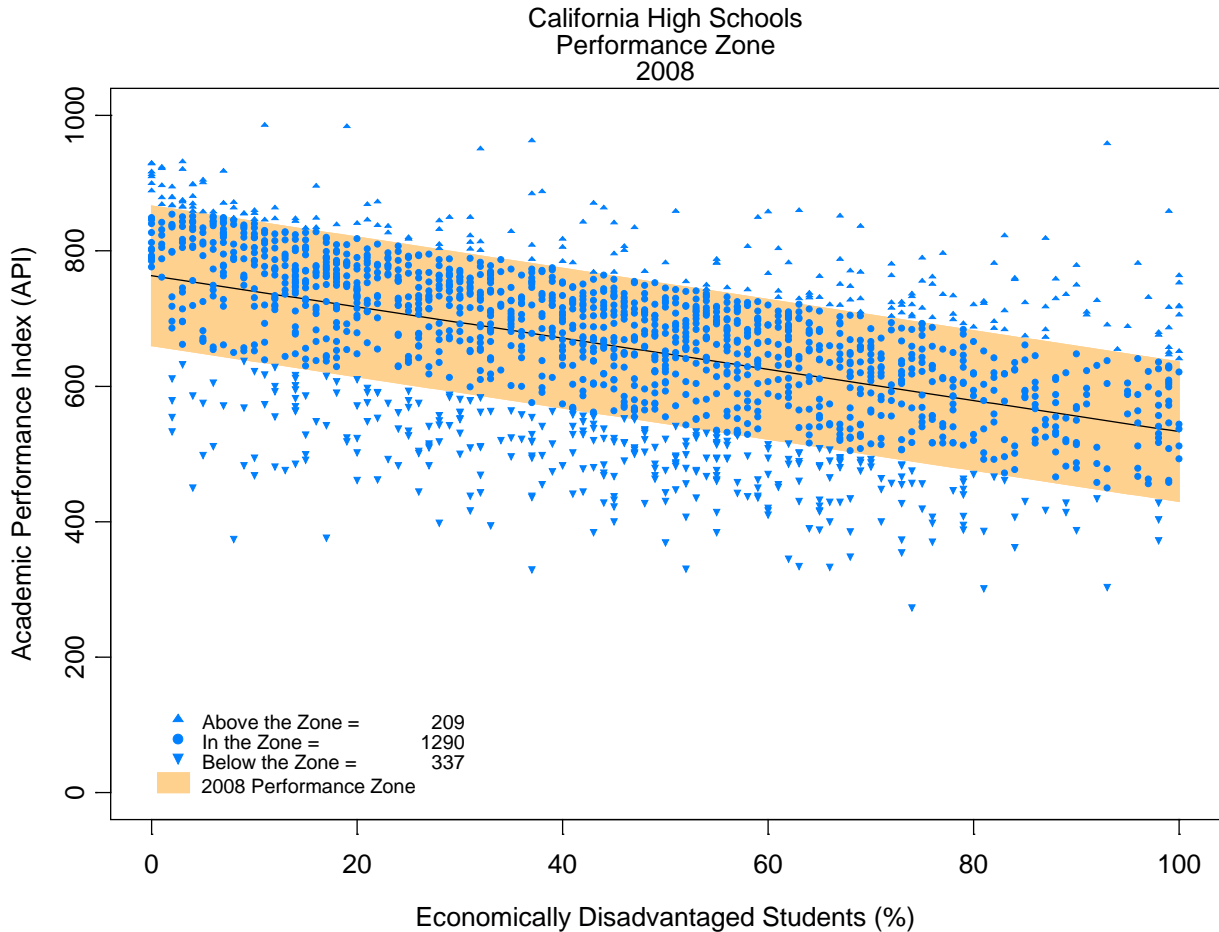


Arkansas

Total number of high schools analyzed statewide	280
Number of schools performing above expectations <i>(i.e., meeting Step 1 criteria)</i>	40
Percent of schools meeting criteria	14.3%

California

Step 1 Analysis: Actual Performance versus Expected Performance
(California High Schools, 2007-08 School Year)



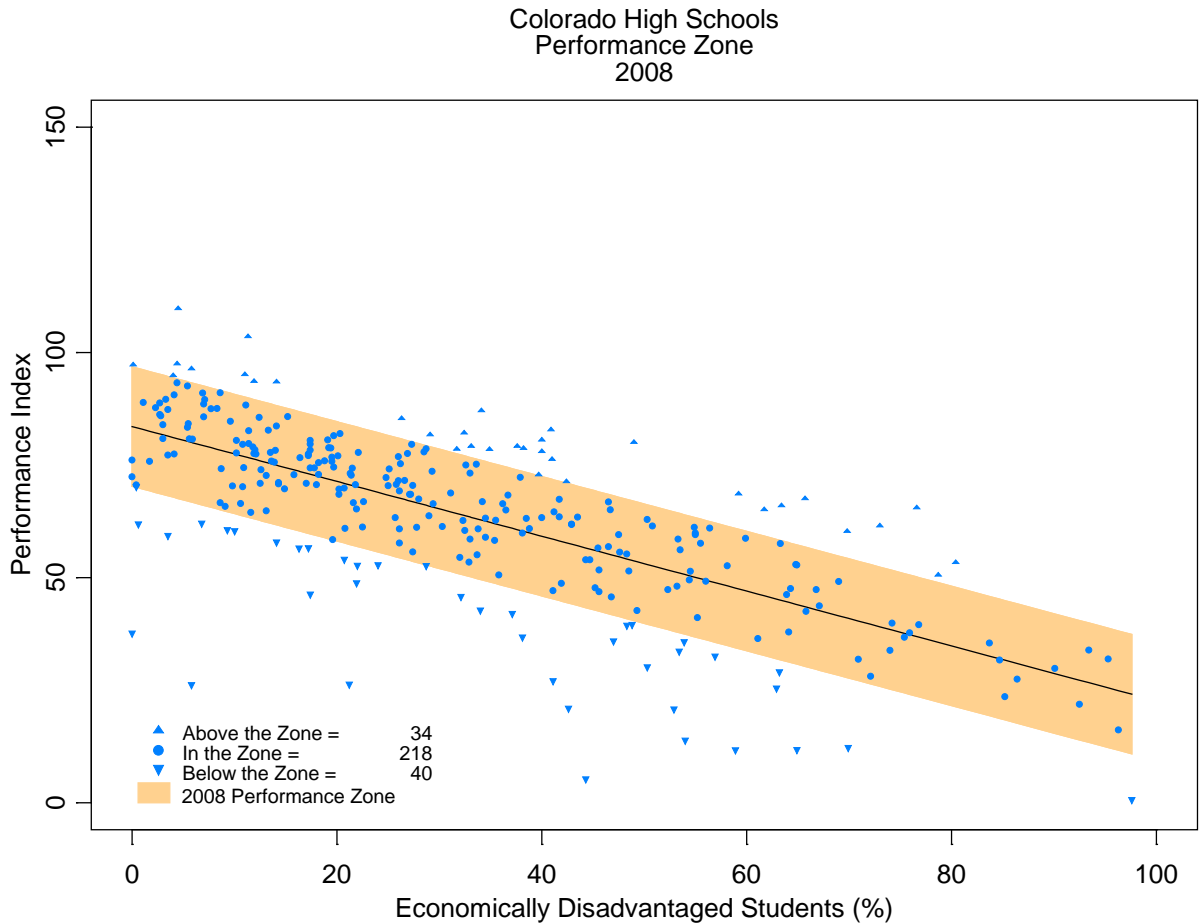
California

Total number of high schools analyzed statewide	1,837
Number of schools performing above expectations <i>(i.e., meeting Step 1 criteria*)</i>	210
Percent of schools meeting criteria	11.4%

* Includes one school which did not report its student poverty rate – this school was compared to the y-intercept value required to exceed expectations (i.e., was treated as if it reported zero percent economically disadvantaged students).

Colorado

Step 1 Analysis: Actual Performance versus Expected Performance
(Colorado High Schools, 2007-08 School Year)

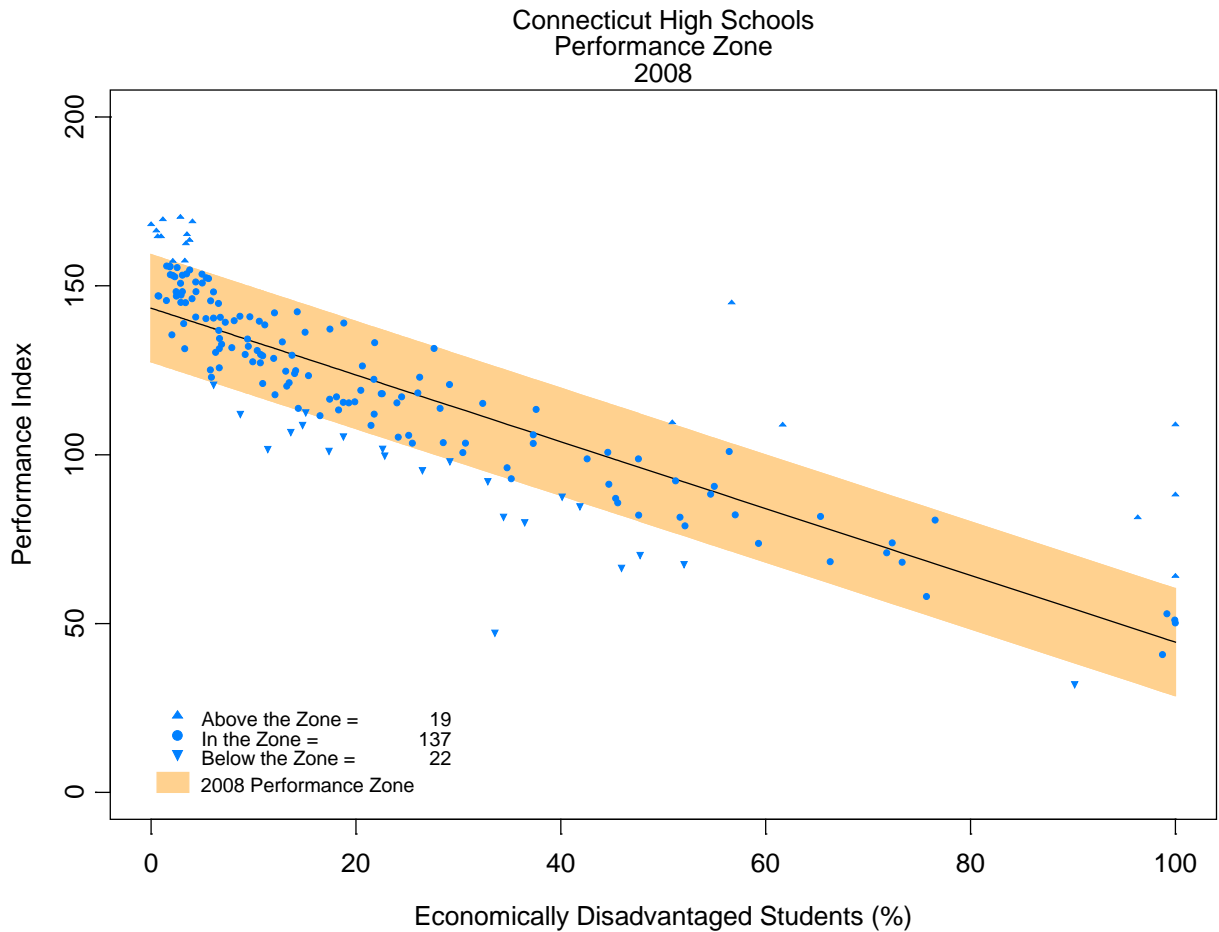


Colorado

Total number of high schools analyzed statewide	292
Number of schools performing above expectations <i>(i.e., meeting Step 1 criteria)</i>	34
Percent of schools meeting criteria	11.6%

Connecticut

Step 1 Analysis: Actual Performance versus Expected Performance
(Connecticut High Schools, 2007-08 School Year)

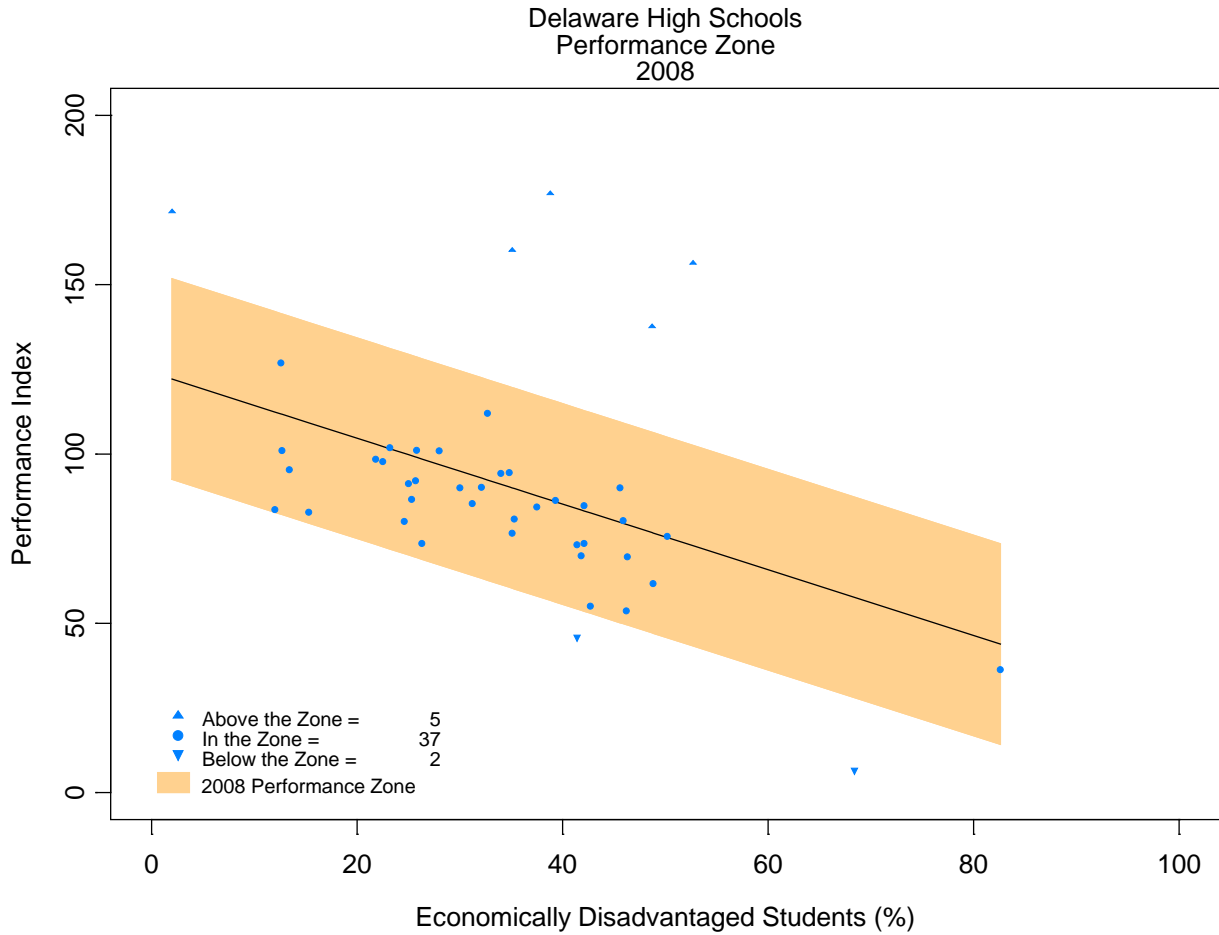


Connecticut

Total number of high schools analyzed statewide	178
Number of schools performing above expectations <i>(i.e., meeting Step 1 criteria)</i>	19
Percent of schools meeting criteria	10.7%

Delaware

Step 1 Analysis: Actual Performance versus Expected Performance
(Delaware High Schools, 2007-08 School Year)

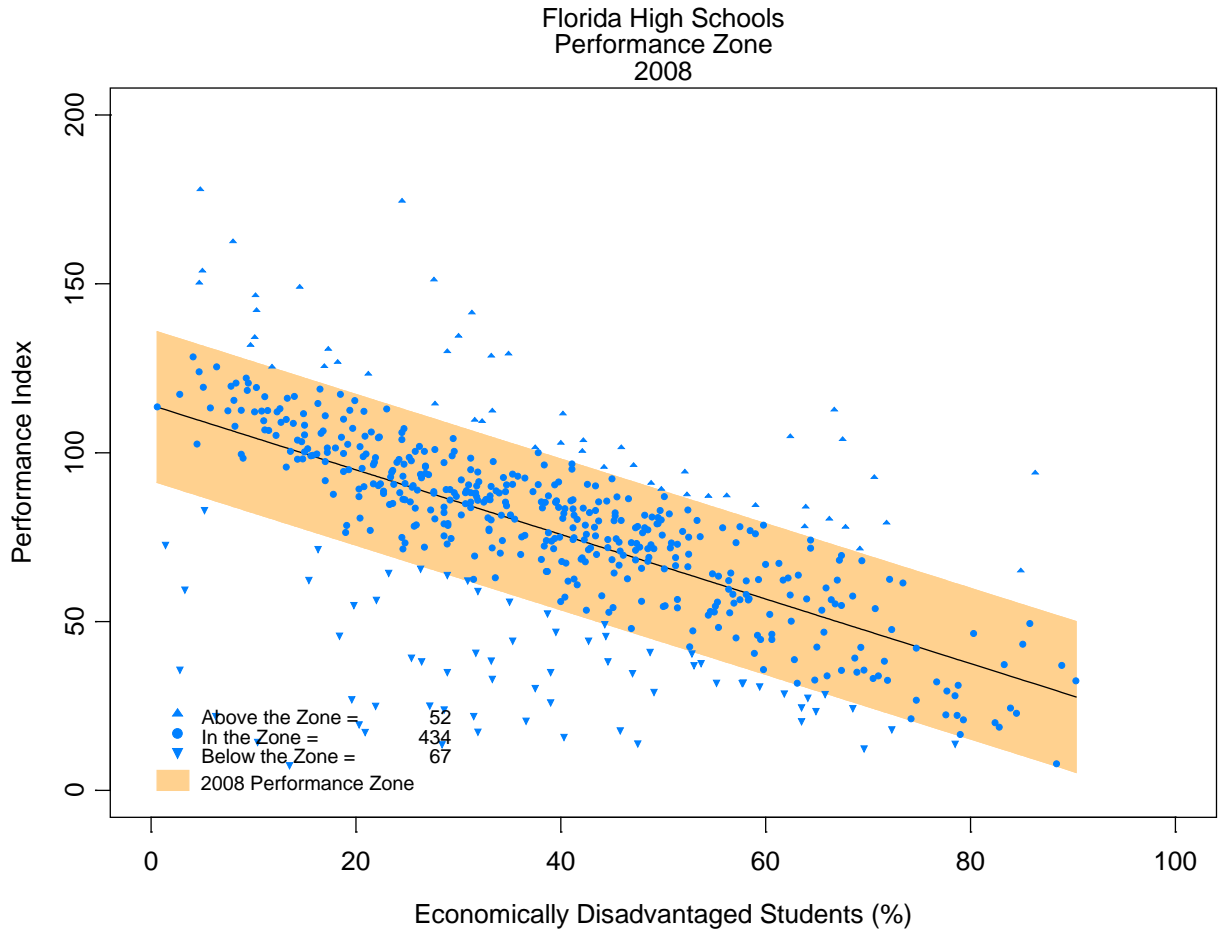


Delaware

Total number of high schools analyzed statewide	44
Number of schools performing above expectations <i>(i.e., meeting Step 1 criteria)</i>	5
Percent of schools meeting criteria	11.4%

Florida

Step 1 Analysis: Actual Performance versus Expected Performance
(Florida High Schools, 2007-08 School Year)

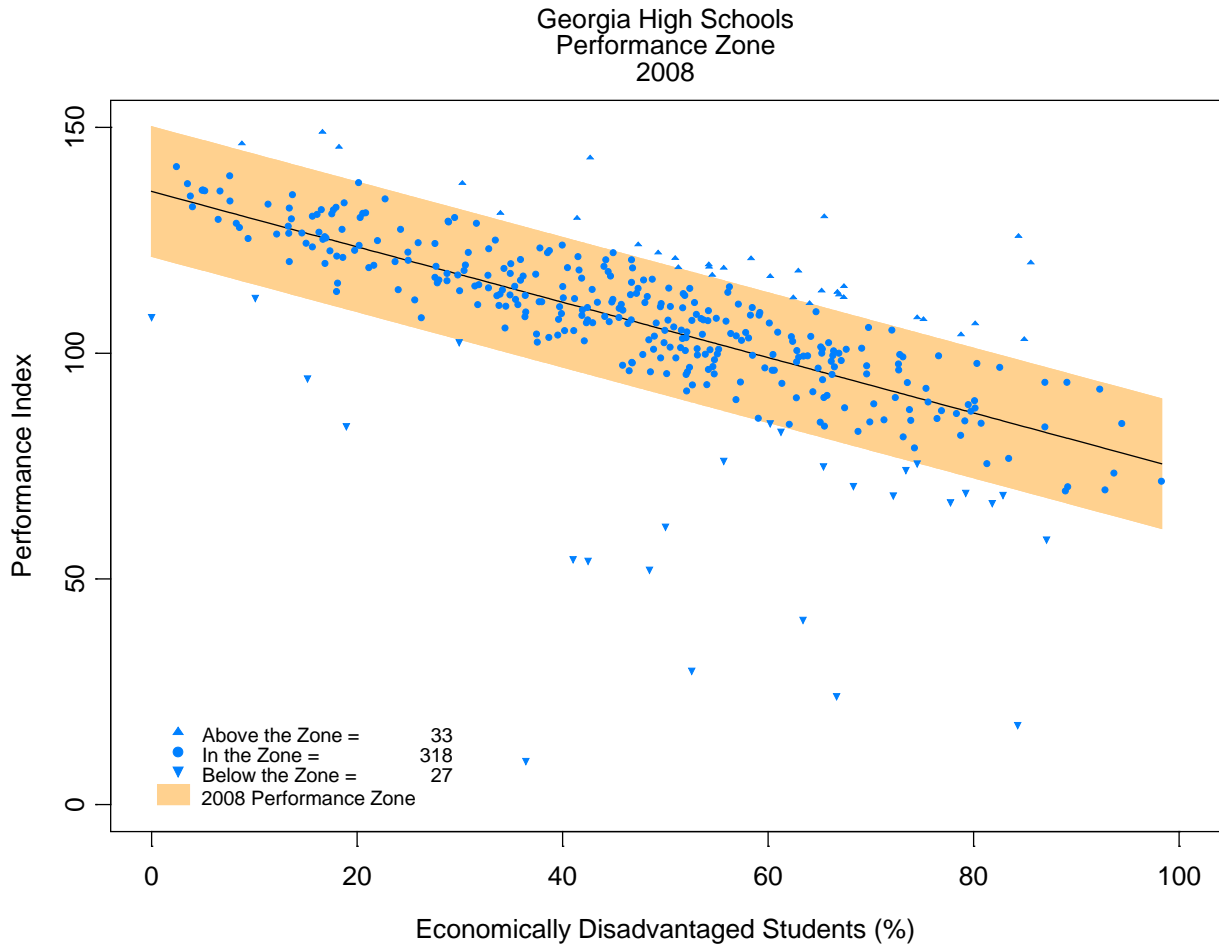


Florida

Total number of high schools analyzed statewide	553
Number of schools performing above expectations <i>(i.e., meeting Step 1 criteria)</i>	52
Percent of schools meeting criteria	9.4%

Georgia

Step 1 Analysis: Actual Performance versus Expected Performance
(Georgia High Schools, 2007-08 School Year)

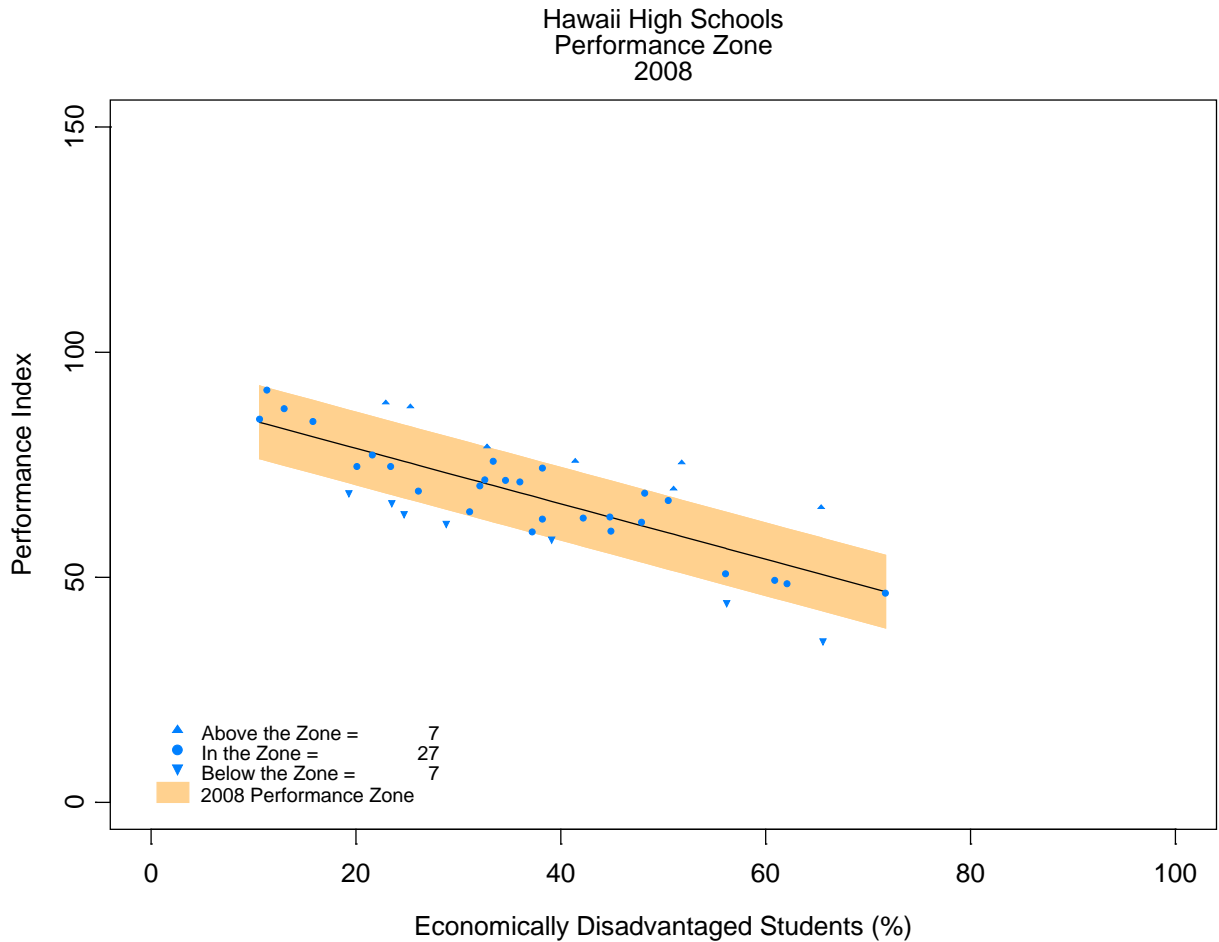


Georgia

Total number of high schools analyzed statewide	378
Number of schools performing above expectations <i>(i.e., meeting Step 1 criteria)</i>	33
Percent of schools meeting criteria	8.7%

Hawaii

Step 1 Analysis: Actual Performance versus Expected Performance
(Hawaii High Schools, 2007-08 School Year)



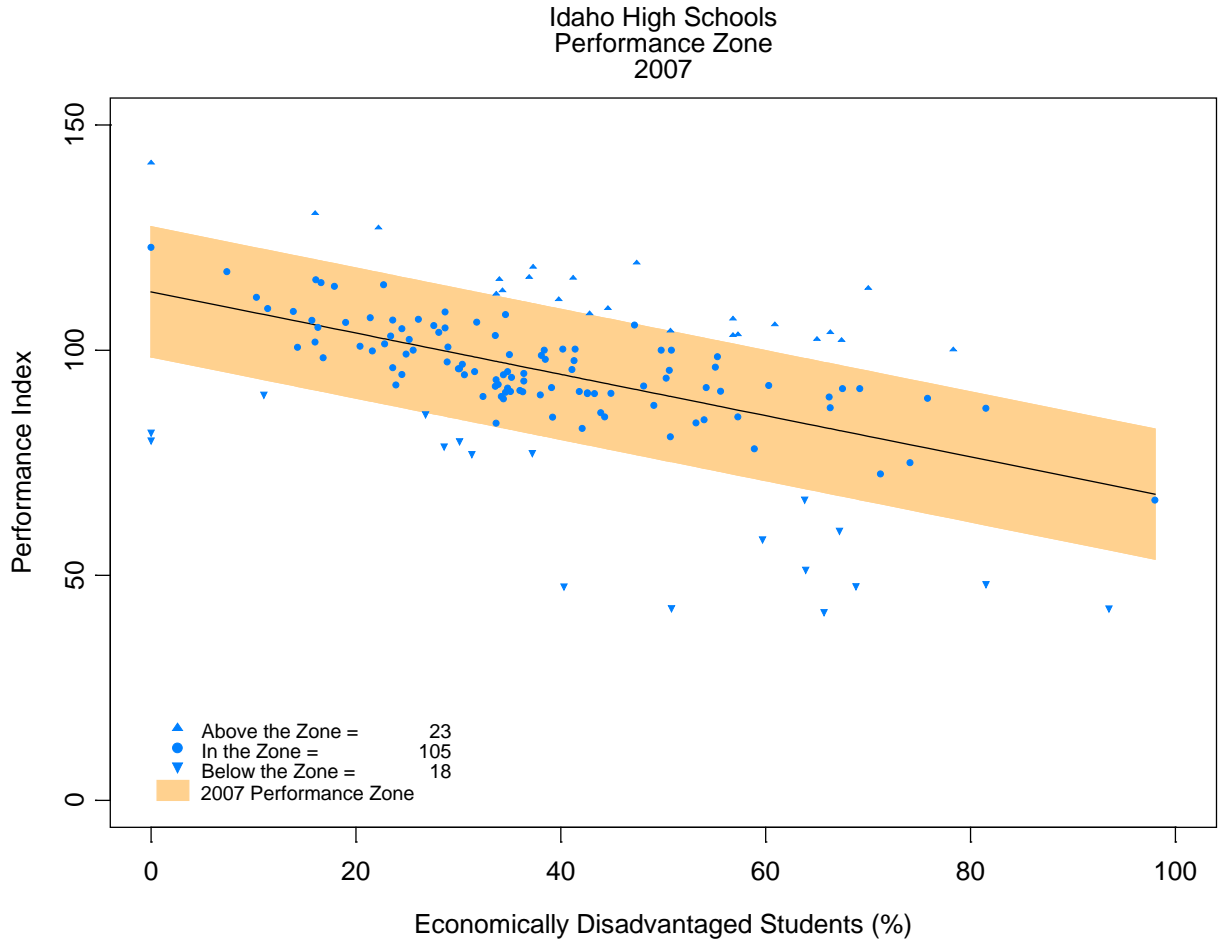
Hawaii

Total number of high schools analyzed statewide	42
Number of schools performing above expectations <i>(i.e., meeting Step 1 criteria *)</i>	8
Percent of schools meeting criteria	19.0%

* Includes one school which did not report its student poverty rate – this school was compared to the y-intercept value required to exceed expectations (i.e., was treated as if it reported zero percent economically disadvantaged students).

Idaho

Step 1 Analysis: Actual Performance versus Expected Performance
(Idaho High Schools, 2006-07 School Year[#])



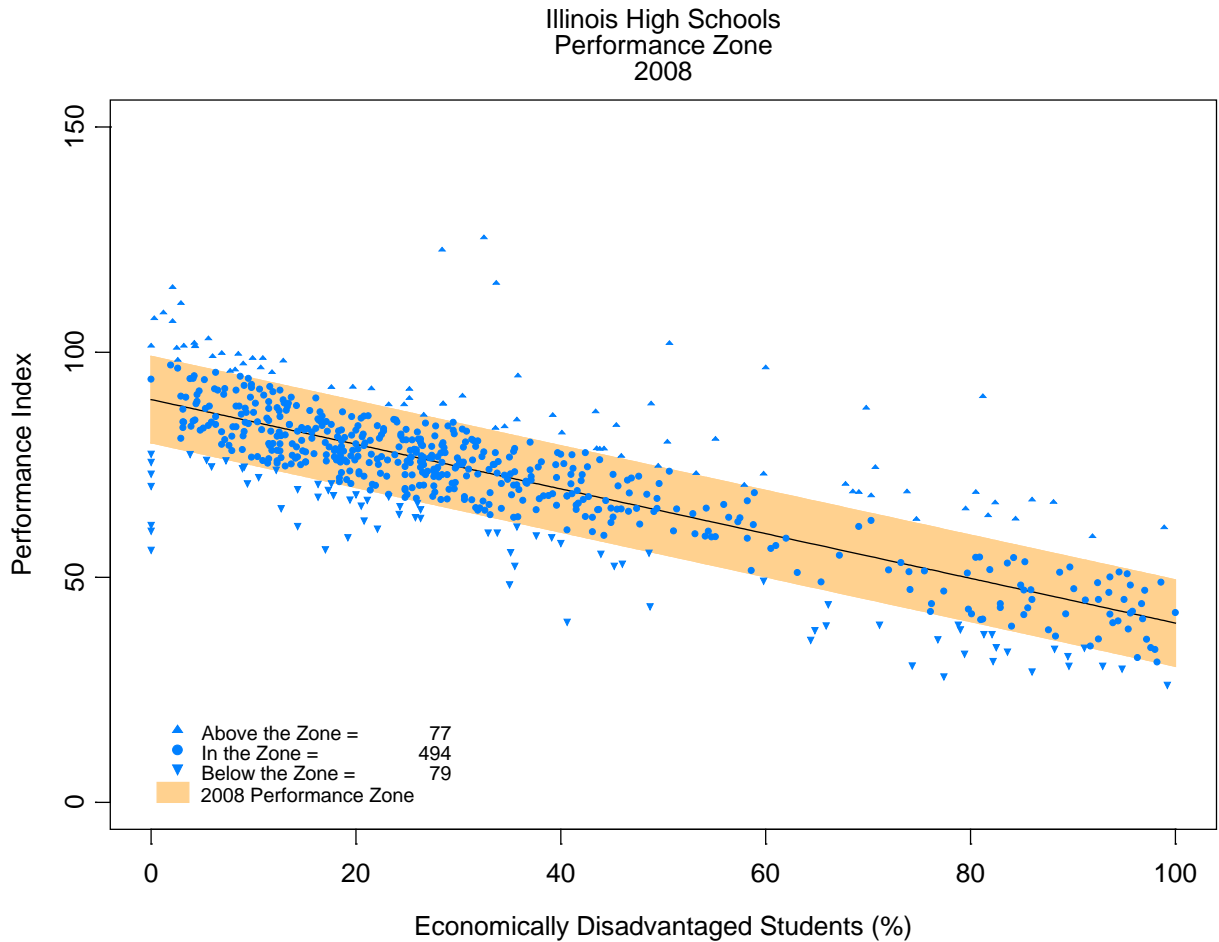
Idaho

Total number of high schools analyzed statewide	146
Number of schools performing above expectations <i>(i.e., meeting Step 1 criteria)</i>	23
Percent of schools meeting criteria	15.8%

[#] For this state, 2006-07 data were substituted in lieu of 2007-08 data, which were unavailable or incomplete at the time of analysis.

Illinois

Step 1 Analysis: Actual Performance versus Expected Performance
(Illinois High Schools, 2007-08 School Year)

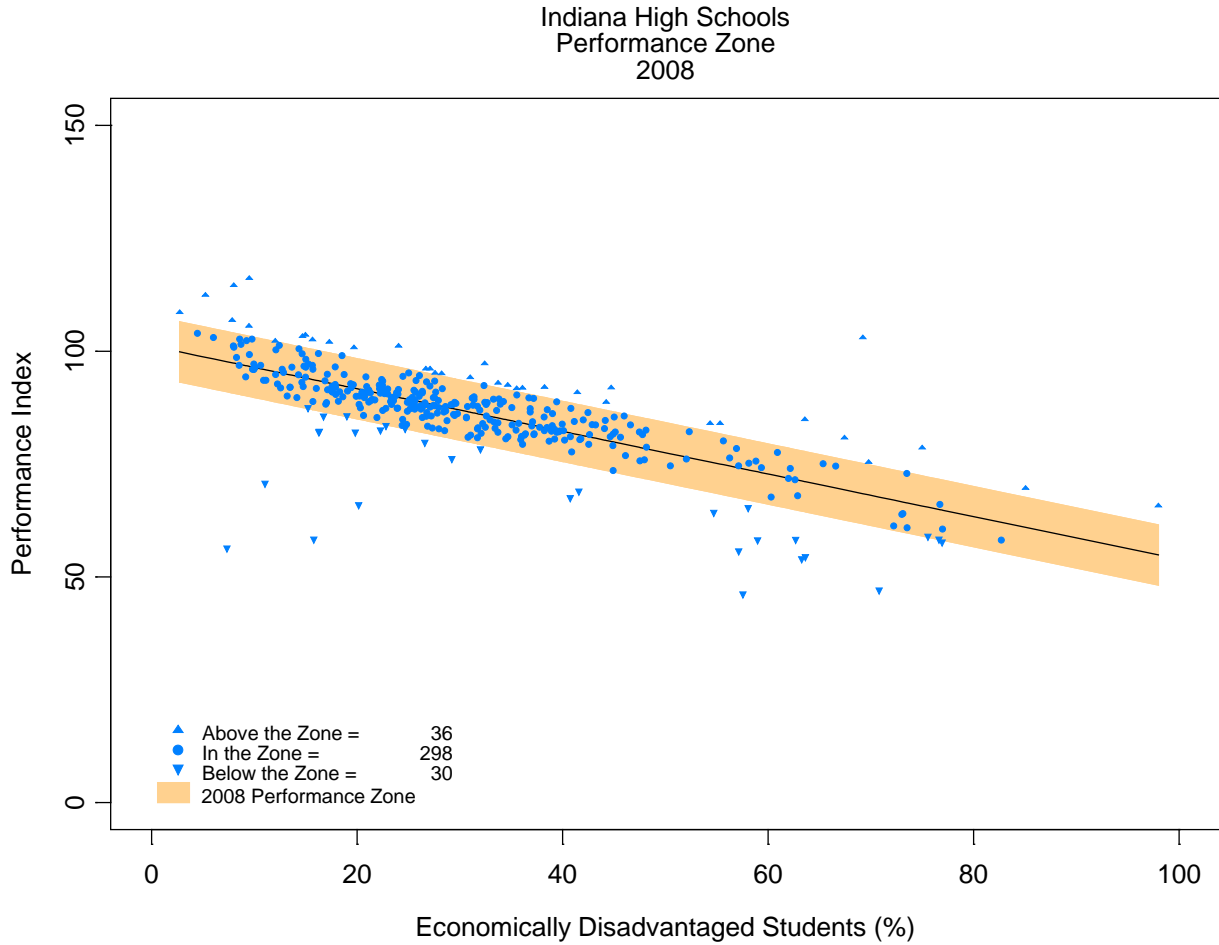


Illinois

Total number of high schools analyzed statewide	650
Number of schools performing above expectations <i>(i.e., meeting Step 1 criteria)</i>	77
Percent of schools meeting criteria	11.8%

Indiana

Step 1 Analysis: Actual Performance versus Expected Performance
(Indiana High Schools, 2007-08 School Year)

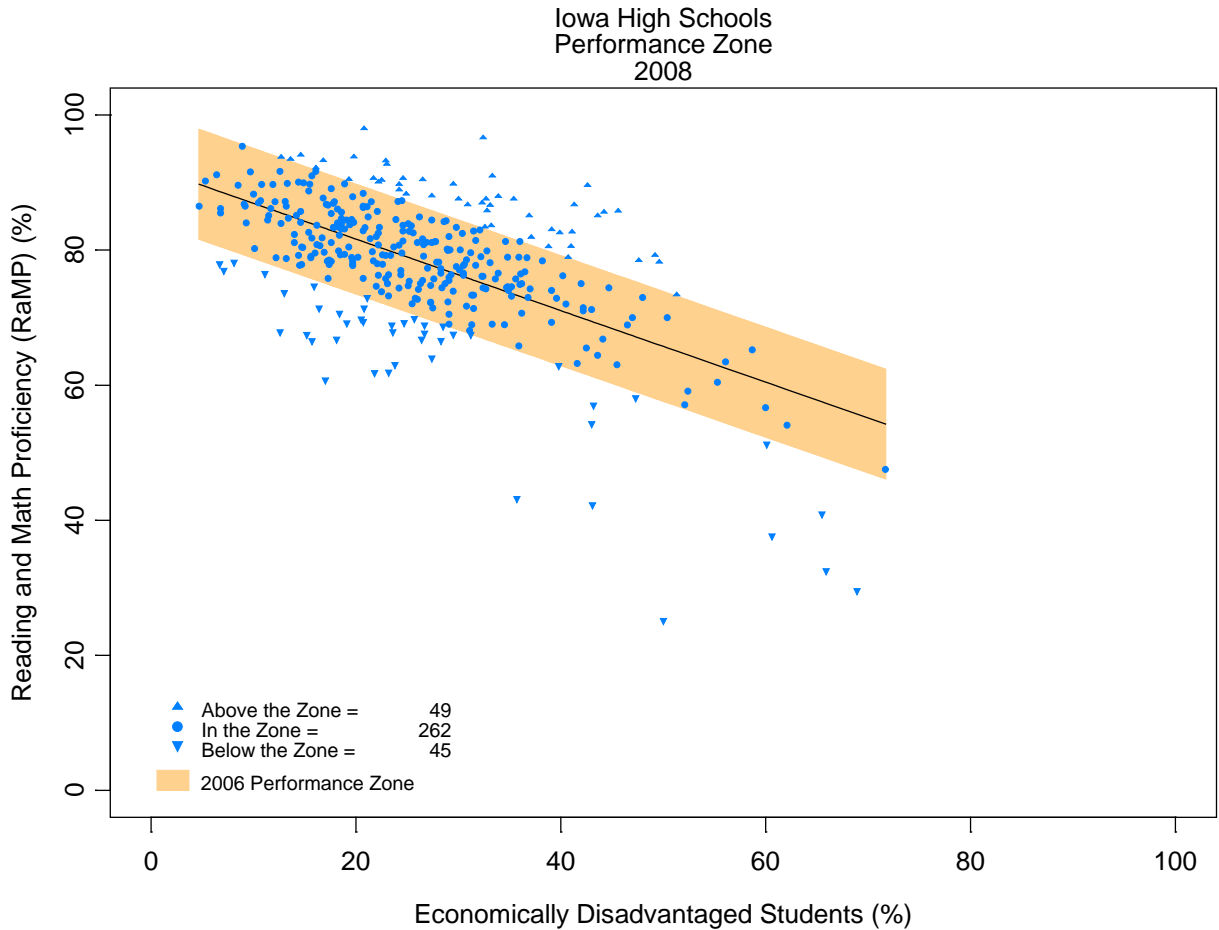


Indiana

Total number of high schools analyzed statewide	364
Number of schools performing above expectations <i>(i.e., meeting Step 1 criteria)</i>	36
Percent of schools meeting criteria	9.9%

Iowa

Step 1 Analysis: Actual Performance versus Expected Performance
(Iowa High Schools, 2007-08 School Year)

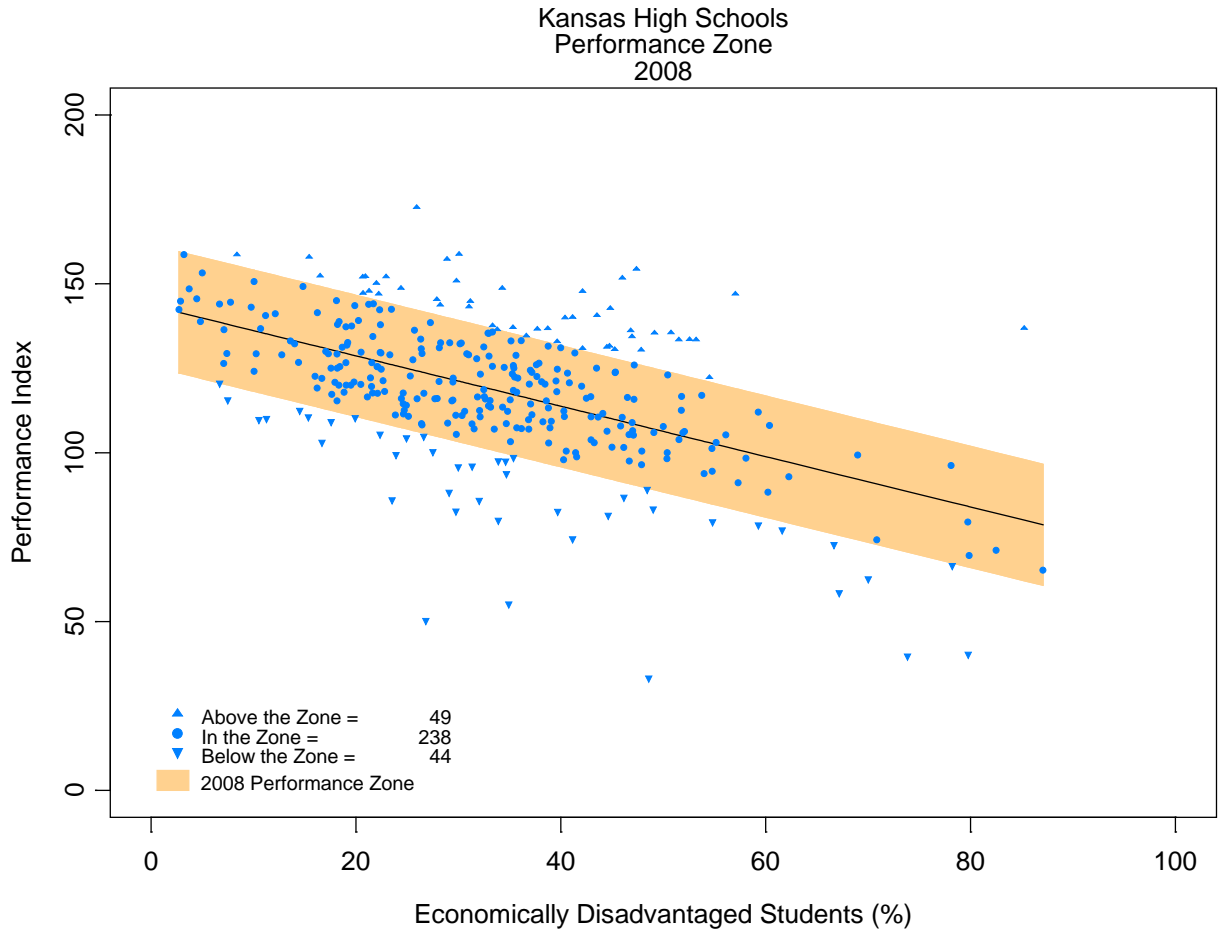


Iowa

Total number of high schools analyzed statewide	356
Number of schools performing above expectations <i>(i.e., meeting Step 1 criteria)</i>	49
Percent of schools meeting criteria	13.8%

Kansas

Step 1 Analysis: Actual Performance versus Expected Performance
(Kansas High Schools, 2007-08 School Year)

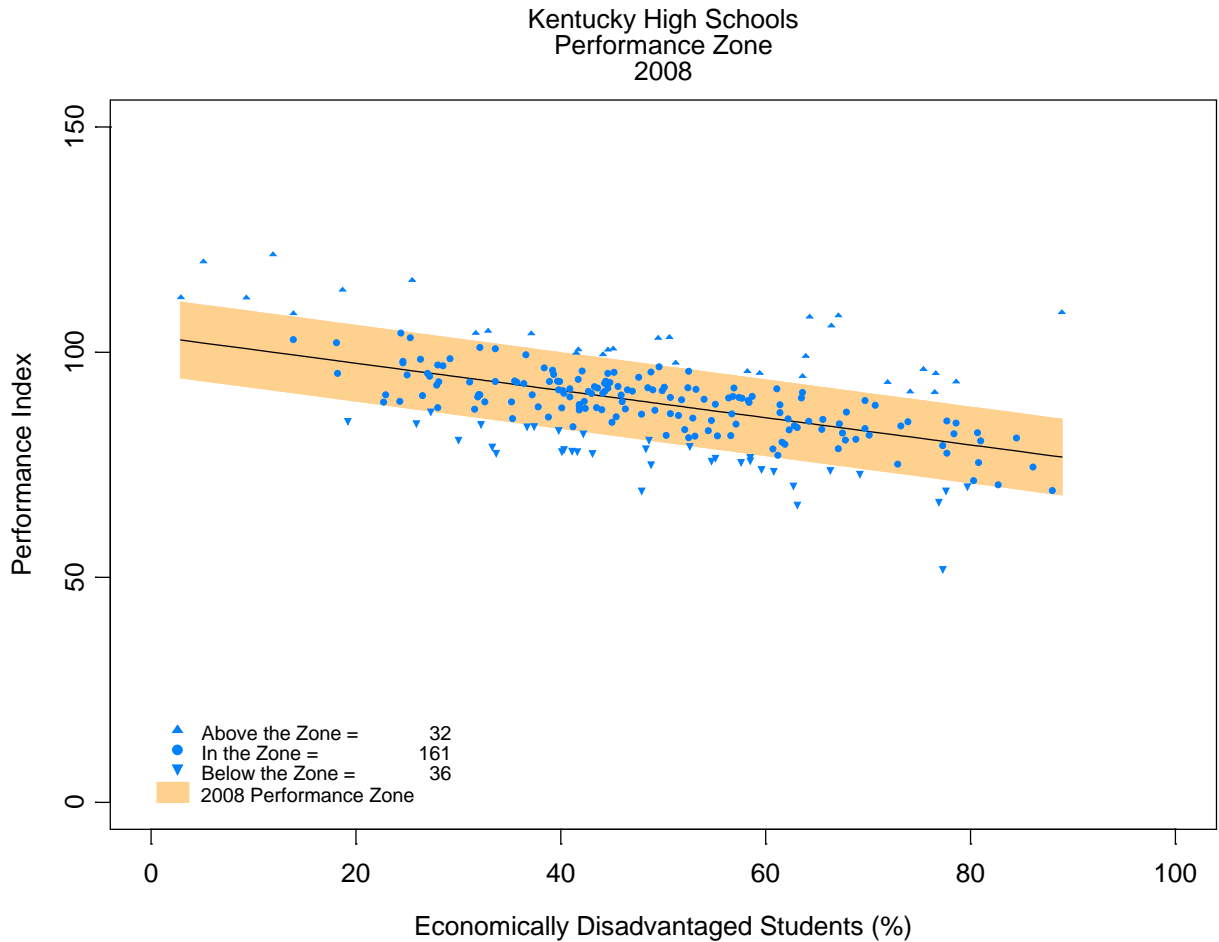


Kansas

Total number of high schools analyzed statewide	331
Number of schools performing above expectations <i>(i.e., meeting Step 1 criteria)</i>	49
Percent of schools meeting criteria	14.8%

Kentucky

Step 1 Analysis: Actual Performance versus Expected Performance
(Kentucky High Schools, 2007-08 School Year)

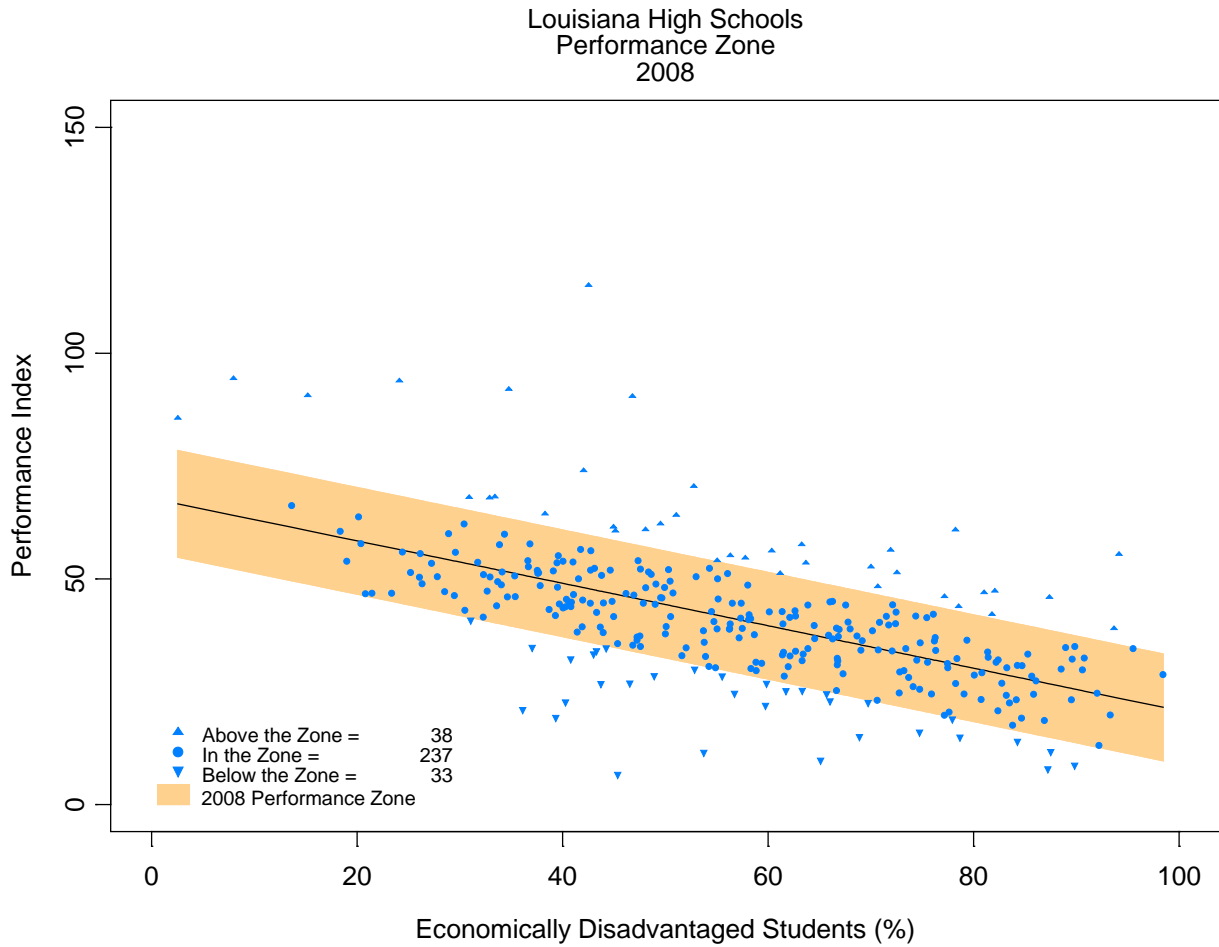


Kentucky

Total number of high schools analyzed statewide	229
Number of schools performing above expectations <i>(i.e., meeting Step 1 criteria)</i>	32
Percent of schools meeting criteria	14.0%

Louisiana

Step 1 Analysis: Actual Performance versus Expected Performance
(Louisiana High Schools, 2007-08 School Year)



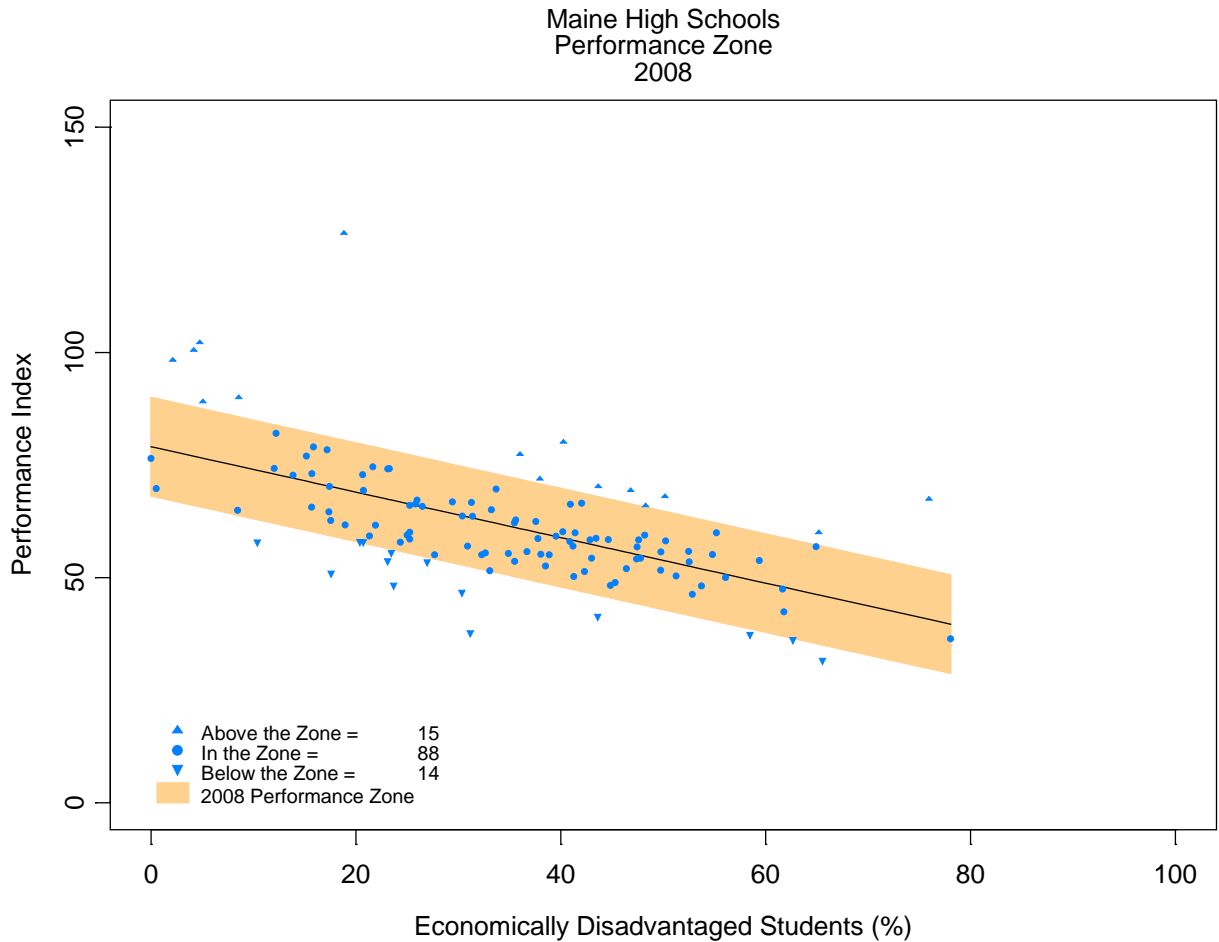
Louisiana

Total number of high schools analyzed statewide	309
Number of schools performing above expectations <i>(i.e., meeting Step 1 criteria*)</i>	39
Percent of schools meeting criteria	12.6%

* Includes one school which did not report its student poverty rate – this school was compared to the y-intercept value required to exceed expectations (i.e., was treated as if it reported zero percent economically disadvantaged students).

Maine

Step 1 Analysis: Actual Performance versus Expected Performance
(Maine High Schools, 2007-08 School Year)

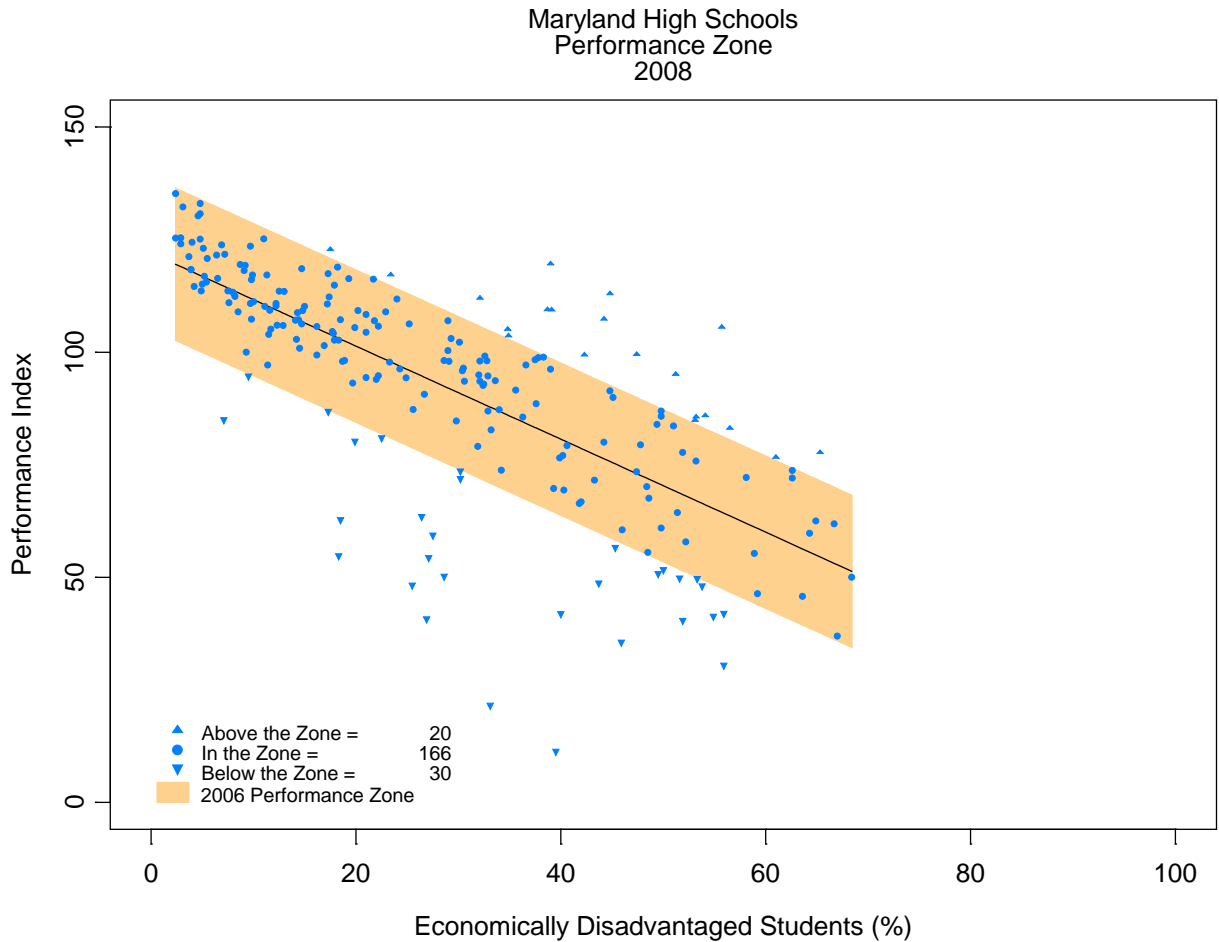


Maine

Total number of high schools analyzed statewide	117
Number of schools performing above expectations <i>(i.e., meeting Step 1 criteria)</i>	15
Percent of schools meeting criteria	12.8%

Maryland

Step 1 Analysis: Actual Performance versus Expected Performance
(Maryland High Schools, 2007-08 School Year)

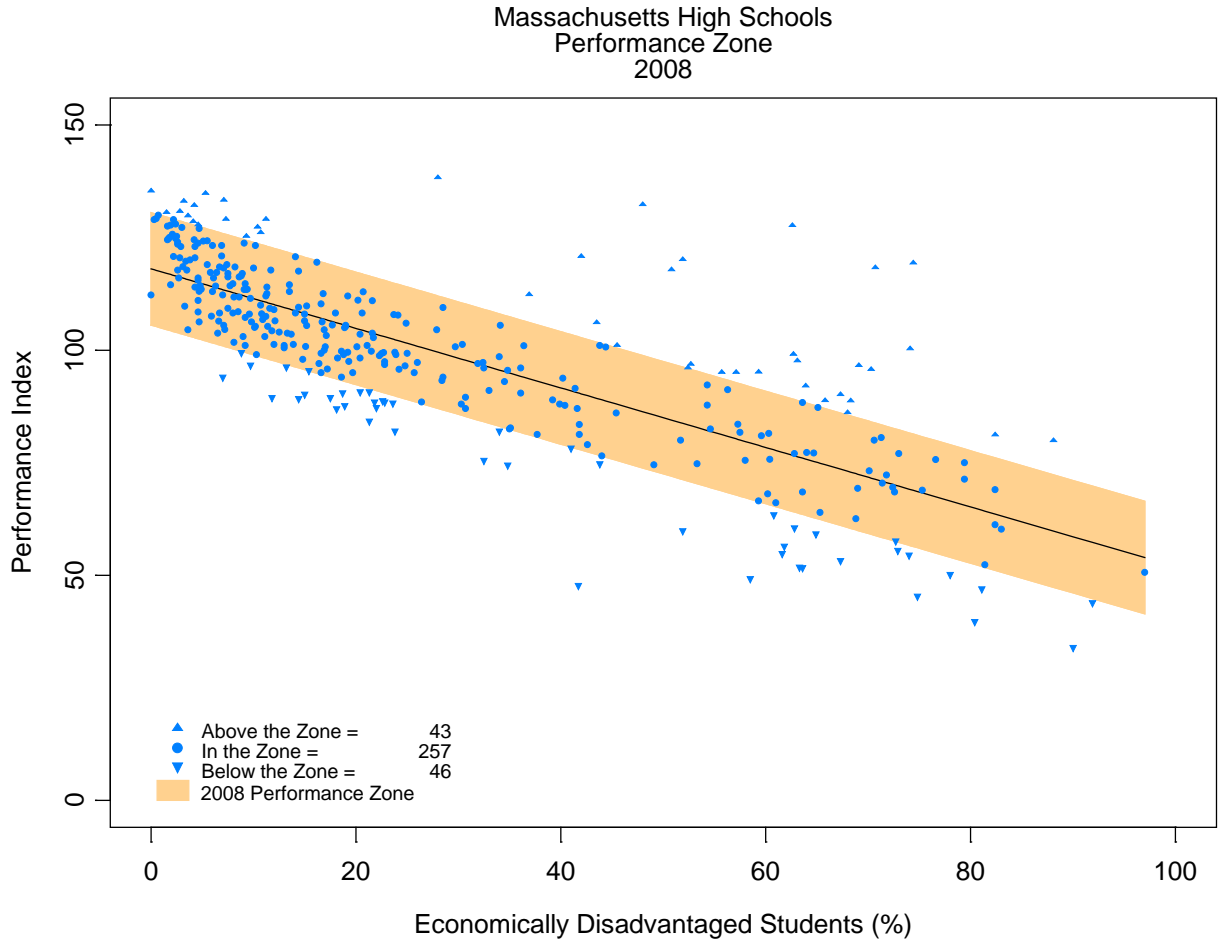


Maryland

Total number of high schools analyzed statewide	216
Number of schools performing above expectations <i>(i.e., meeting Step 1 criteria)</i>	20
Percent of schools meeting criteria	9.3%

Massachusetts

Step 1 Analysis: Actual Performance versus Expected Performance
(Massachusetts High Schools, 2007-08 School Year)

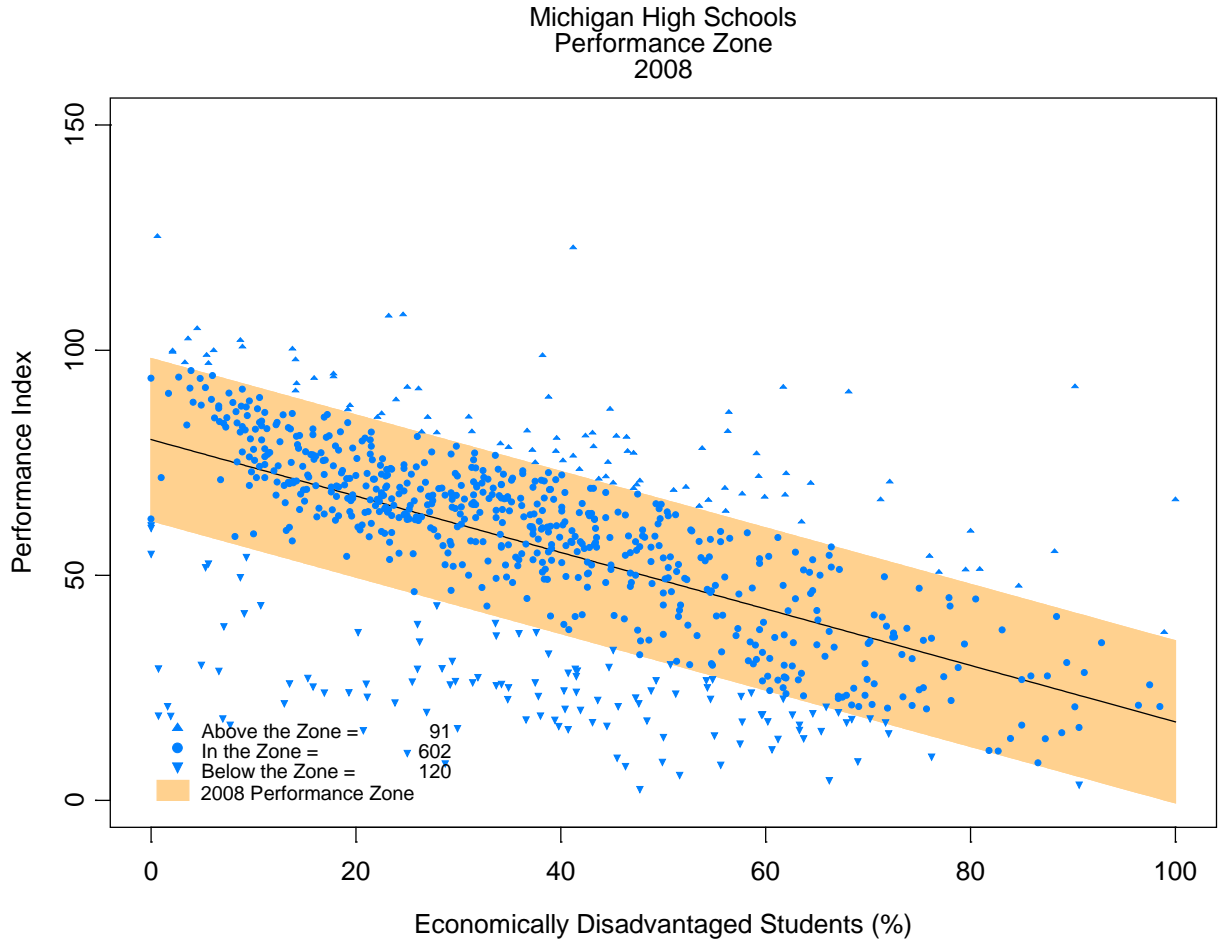


Massachusetts

Total number of high schools analyzed statewide	346
Number of schools performing above expectations <i>(i.e., meeting Step 1 criteria)</i>	43
Percent of schools meeting criteria	12.4%

Michigan

Step 1 Analysis: Actual Performance versus Expected Performance
(Michigan High Schools, 2007-08 School Year)

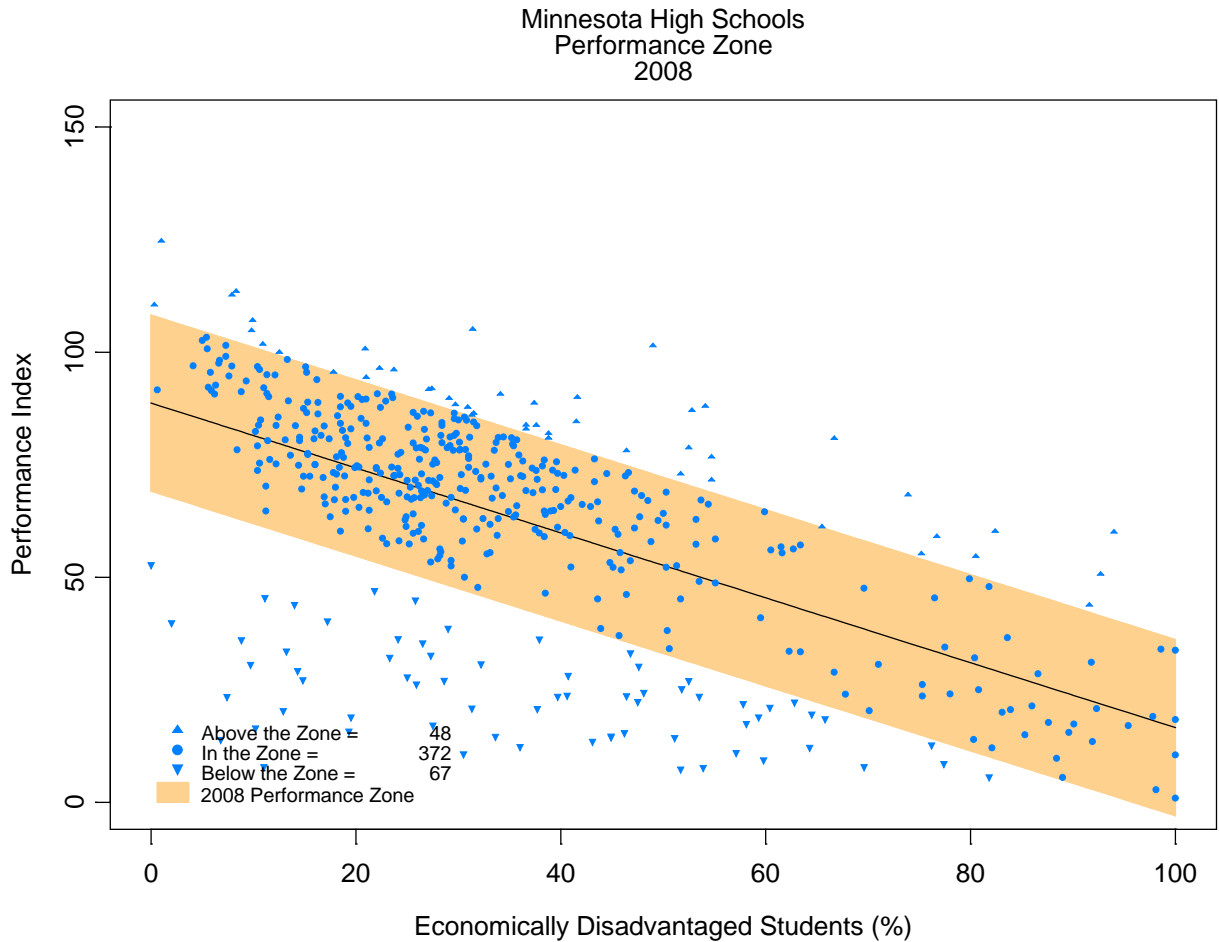


Michigan

Total number of high schools analyzed statewide	813
Number of schools performing above expectations <i>(i.e., meeting Step 1 criteria)</i>	91
Percent of schools meeting criteria	11.2%

Minnesota

Step 1 Analysis: Actual Performance versus Expected Performance
(Minnesota High Schools, 2007-08 School Year)



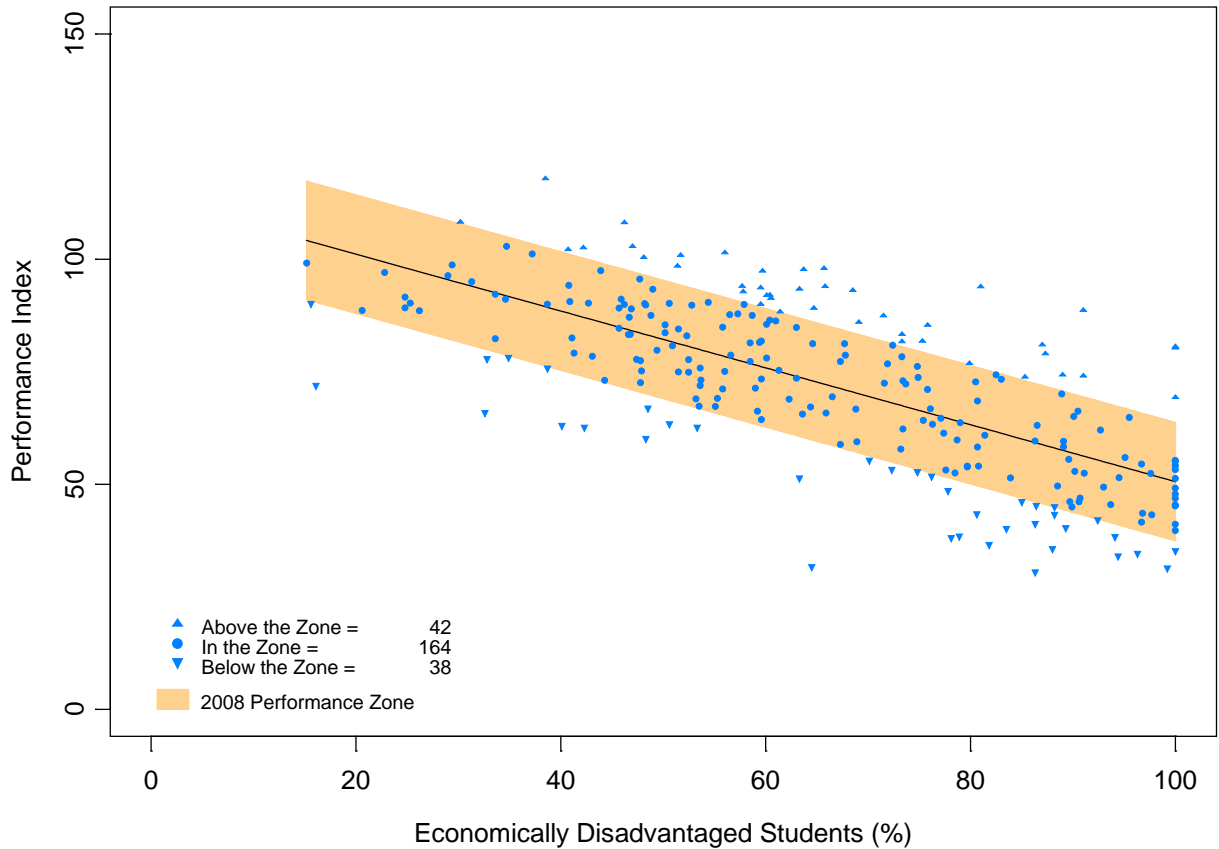
Minnesota

Total number of high schools analyzed statewide	487
Number of schools performing above expectations <i>(i.e., meeting Step 1 criteria)</i>	48
Percent of schools meeting criteria	9.9%

Mississippi

Step 1 Analysis: Actual Performance versus Expected Performance
(Mississippi High Schools, 2007-08 School Year)

Mississippi High Schools
 Performance Zone
 2008



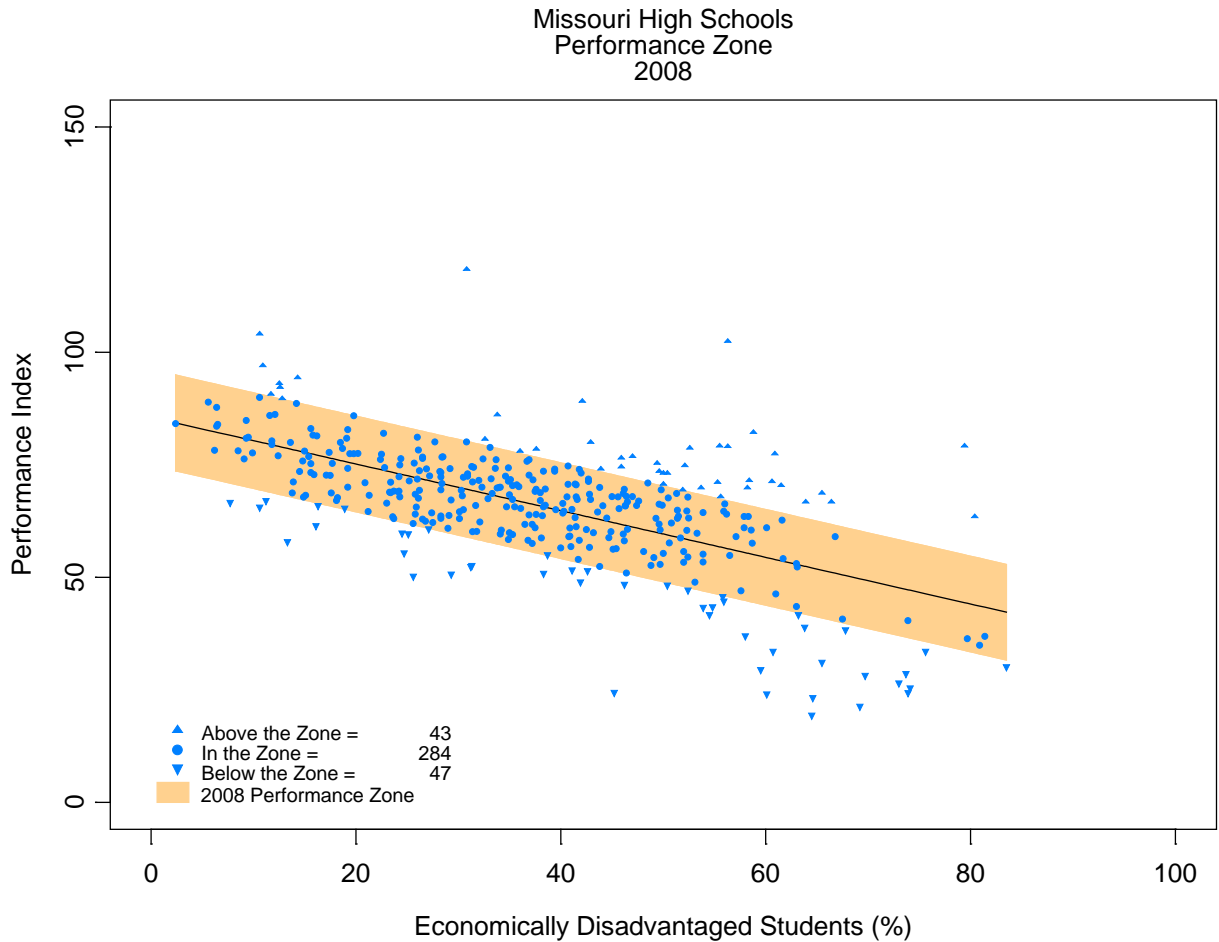
Mississippi

Total number of high schools analyzed statewide	245
Number of schools performing above expectations <i>(i.e., meeting Step 1 criteria *)</i>	43
Percent of schools meeting criteria	17.6%

* Includes one school which did not report its student poverty rate – this school was compared to the y-intercept value required to exceed expectations (i.e., was treated as if it reported zero percent economically disadvantaged students).

Missouri

Step 1 Analysis: Actual Performance versus Expected Performance
(Missouri High Schools, 2007-08 School Year)

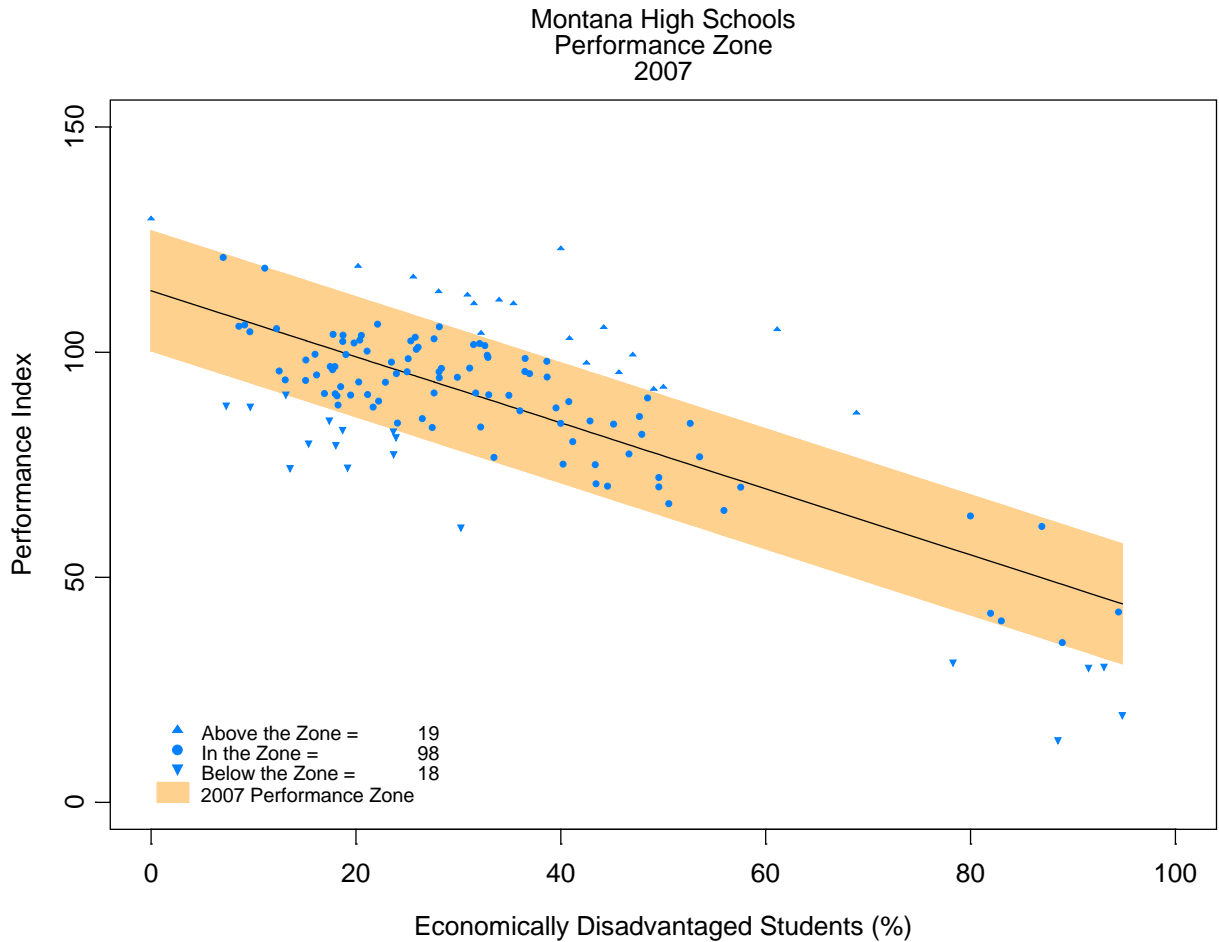


Missouri

Total number of high schools analyzed statewide	374
Number of schools performing above expectations <i>(i.e., meeting Step 1 criteria)</i>	43
Percent of schools meeting criteria	11.5%

Montana

Step 1 Analysis: Actual Performance versus Expected Performance
(Montana High Schools, 2006-07 School Year[#])



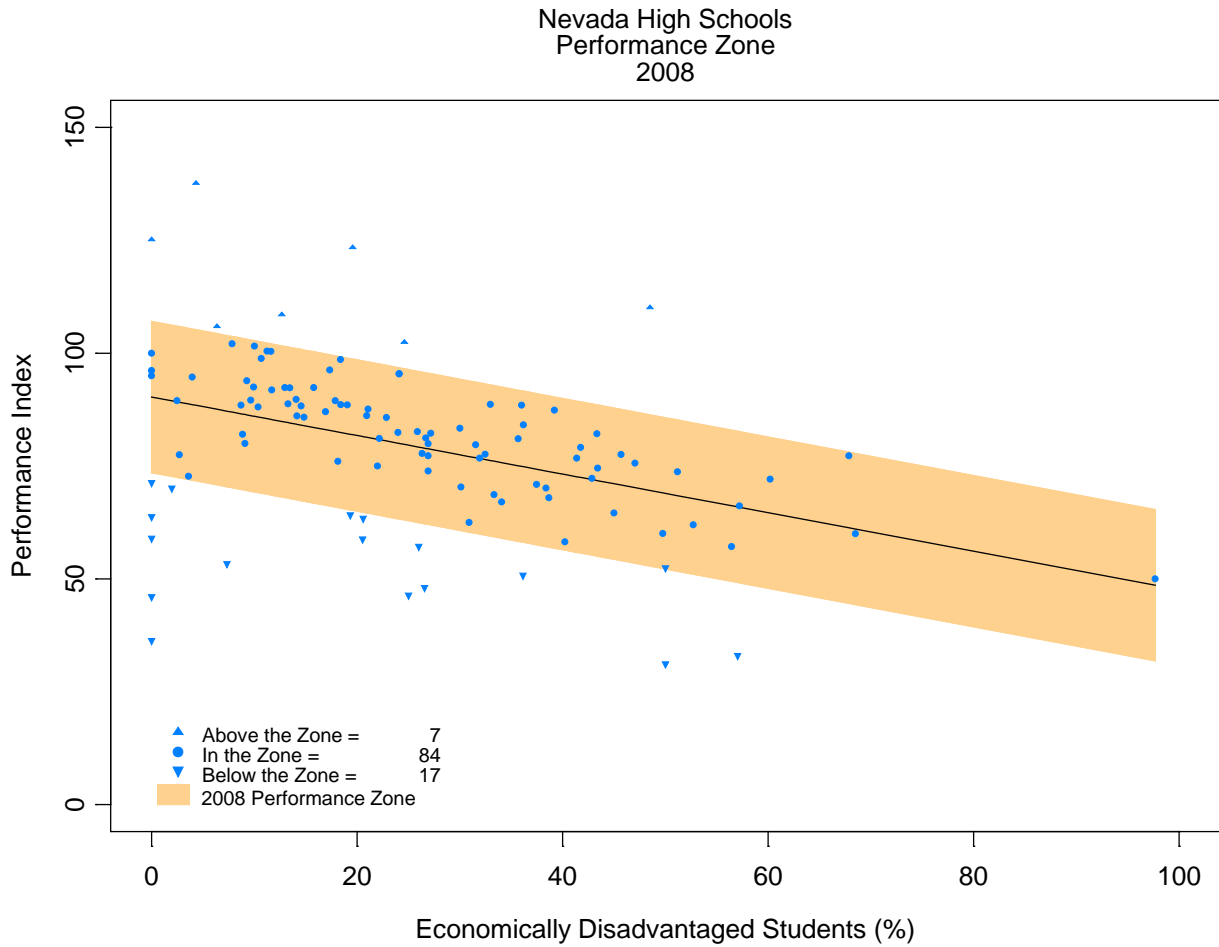
Montana

Total number of high schools analyzed statewide	135
Number of schools performing above expectations <i>(i.e., meeting Step 1 criteria)</i>	19
Percent of schools meeting criteria	14.1%

[#] For this state, 2006-07 data were substituted in lieu of 2007-08 data, which were unavailable or incomplete at the time of analysis.

Nevada

Step 1 Analysis: Actual Performance versus Expected Performance
(Nevada High Schools, 2007-08 School Year)



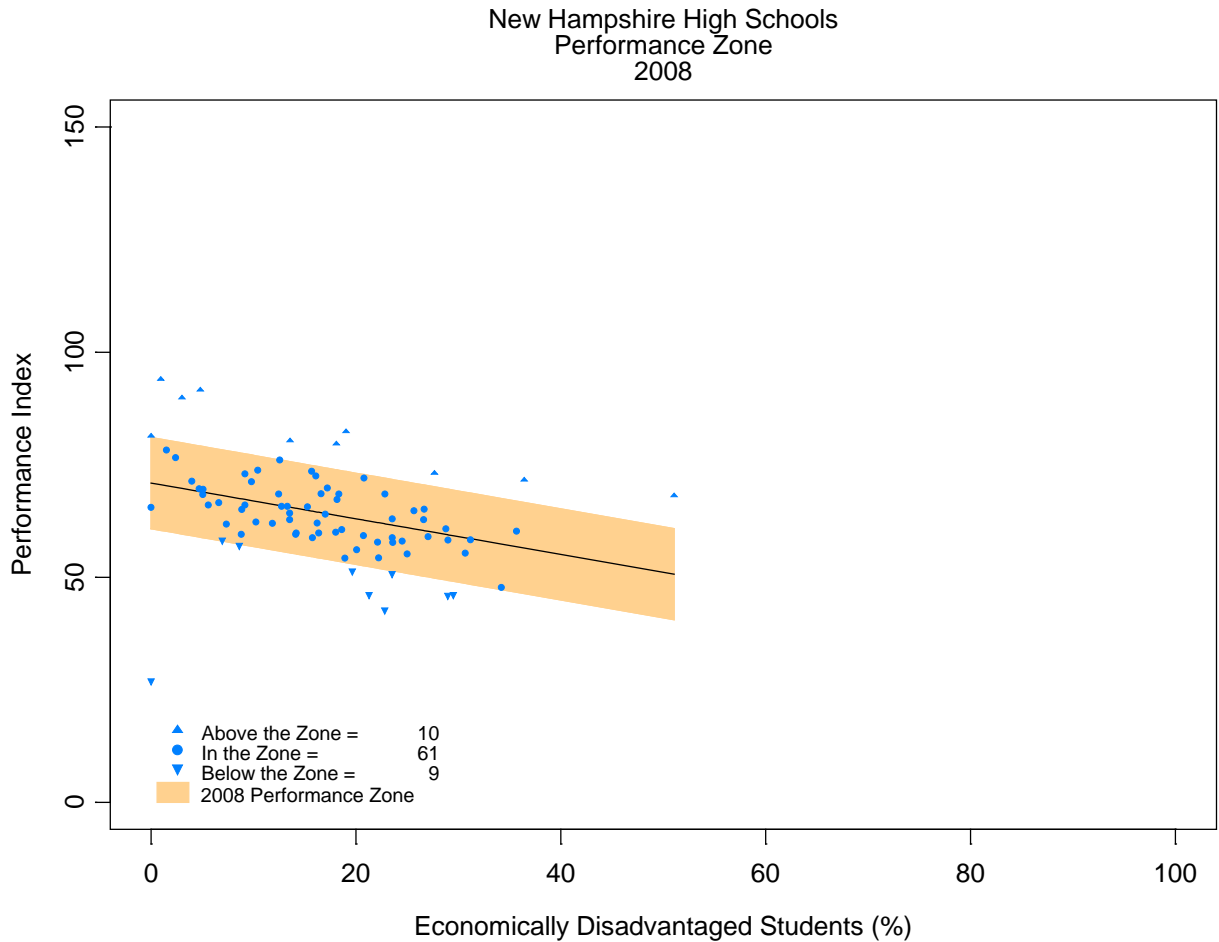
Nevada

Total number of high schools analyzed statewide	109
Number of schools performing above expectations <i>(i.e., meeting Step 1 criteria*)</i>	8
Percent of schools meeting criteria	7.3%

* Includes one school which did not report its student poverty rate – this school was compared to the y-intercept value required to exceed expectations (i.e., was treated as if it reported zero percent economically disadvantaged students).

New Hampshire

Step 1 Analysis: Actual Performance versus Expected Performance
(New Hampshire High Schools, 2007-08 School Year)*

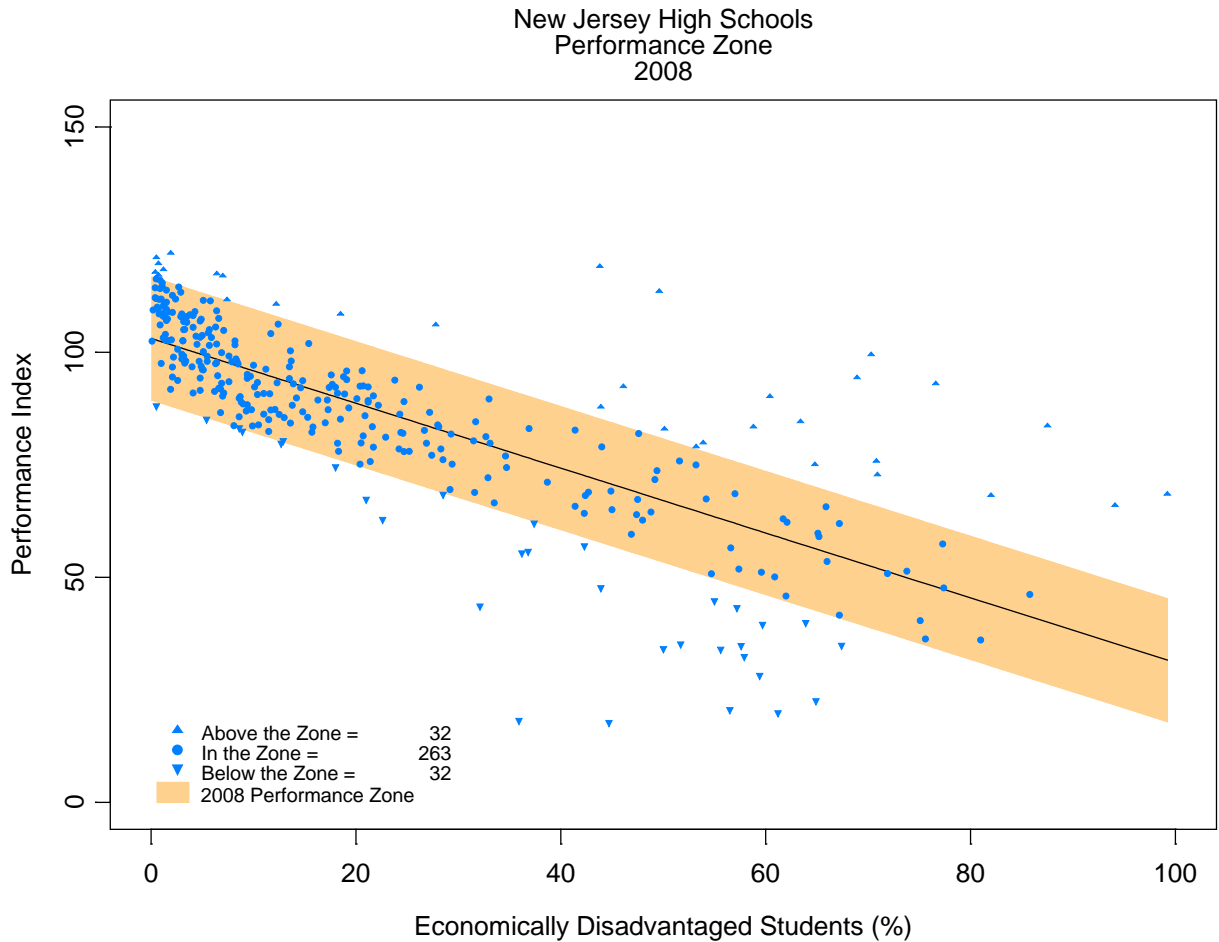


New Hampshire

Total number of high schools analyzed statewide	80
Number of schools performing above expectations <i>(i.e., meeting Step 1 criteria)</i>	10
Percent of schools meeting criteria	12.5%

New Jersey

Step 1 Analysis: Actual Performance versus Expected Performance
(New Jersey High Schools, 2007-08 School Year)



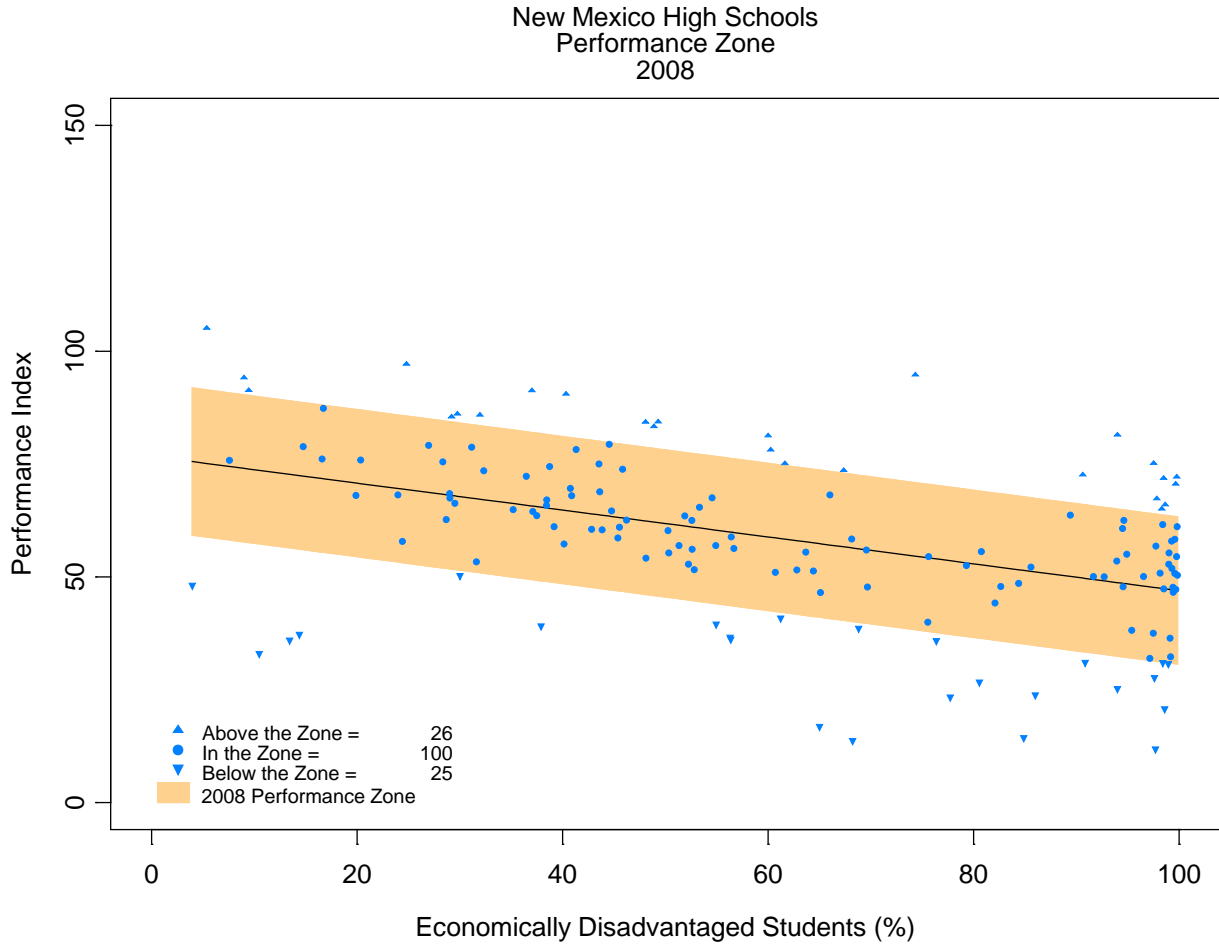
New Jersey

Total number of high schools analyzed statewide	339
Number of schools performing above expectations <i>(i.e., meeting Step 1 criteria *)</i>	44
Percent of schools meeting criteria	13.0%

* Includes twelve schools which did not report their student poverty rates – these schools were compared to the y-intercept value required to exceed expectations (i.e., were treated as if they reported zero percent economically disadvantaged students).

New Mexico

Step 1 Analysis: Actual Performance versus Expected Performance
(New Mexico High Schools, 2007-08 School Year)



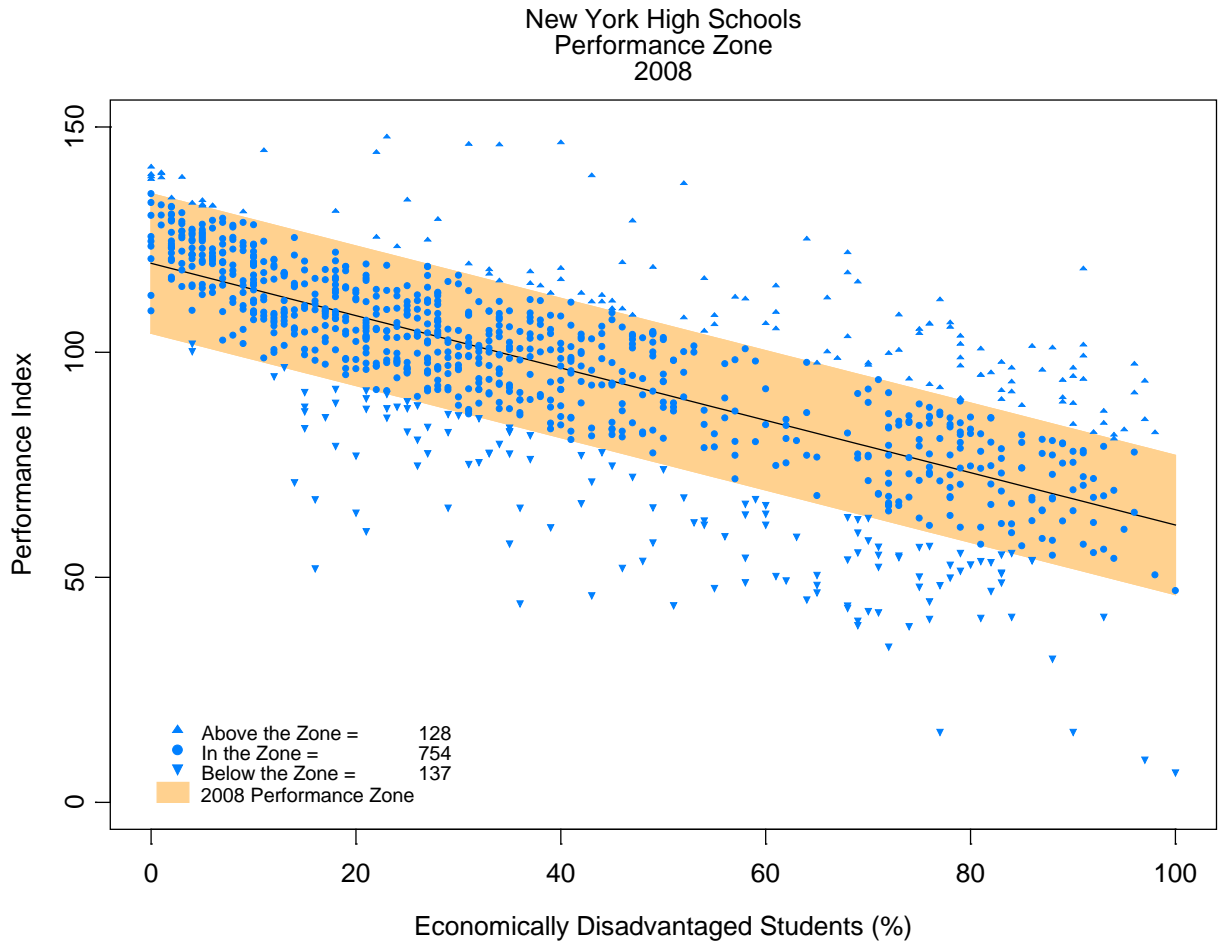
New Mexico

Total number of high schools analyzed statewide	152
Number of schools performing above expectations <i>(i.e., meeting Step 1 criteria*)</i>	27
Percent of schools meeting criteria	17.8%

* Includes one school which did not report its student poverty rate – this school was compared to the y-intercept value required to exceed expectations (i.e., was treated as if it reported zero percent economically disadvantaged students).

New York

Step 1 Analysis: Actual Performance versus Expected Performance*
(New York High Schools, 2007-08 School Year)



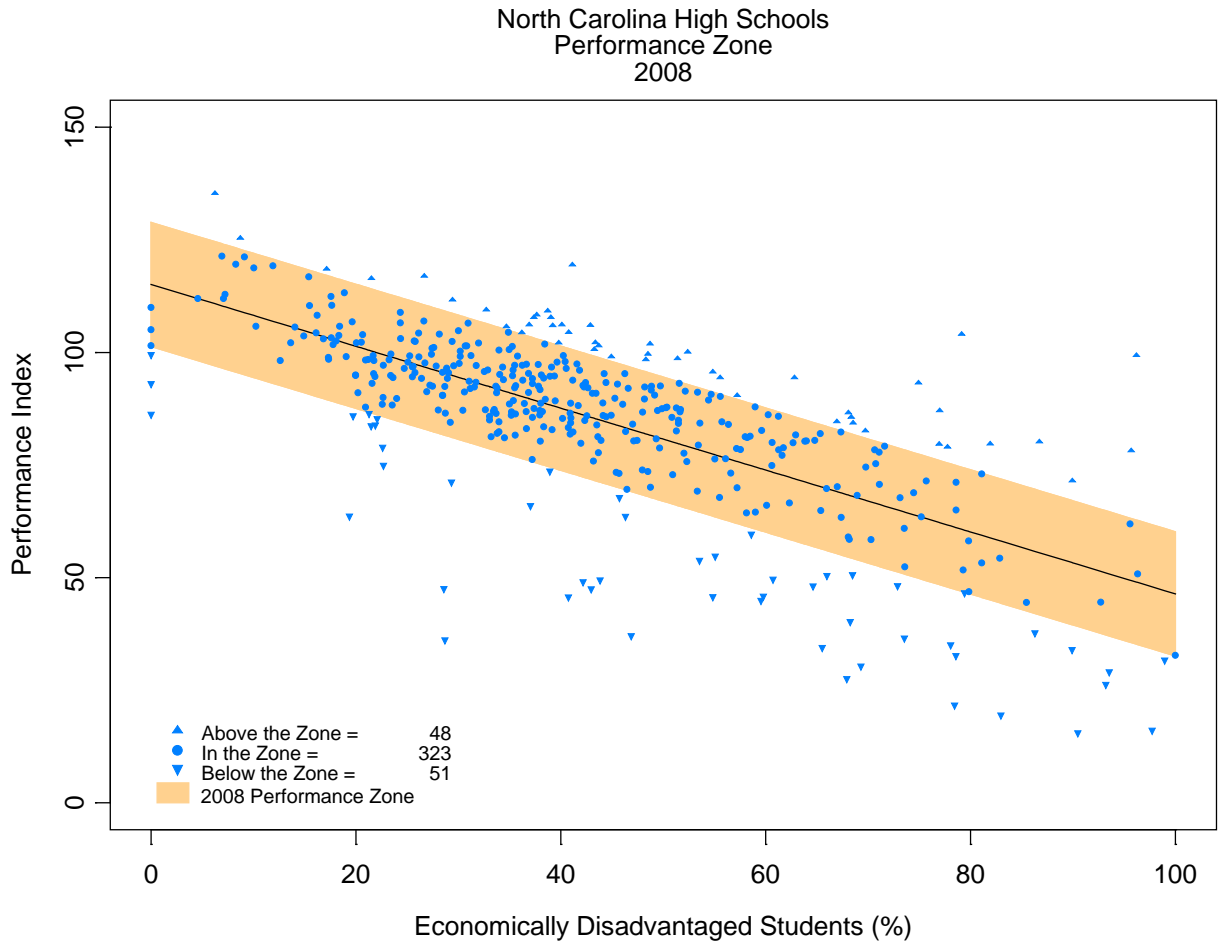
* Note – New York reports the percentage of economically disadvantaged students as whole numbers only

New York

Total number of high schools analyzed statewide	1,019
Number of schools performing above expectations <i>(i.e., meeting Step 1 criteria)</i>	128
Percent of schools meeting criteria	12.6%

North Carolina

Step 1 Analysis: Actual Performance versus Expected Performance
(North Carolina High Schools, 2007-08 School Year)



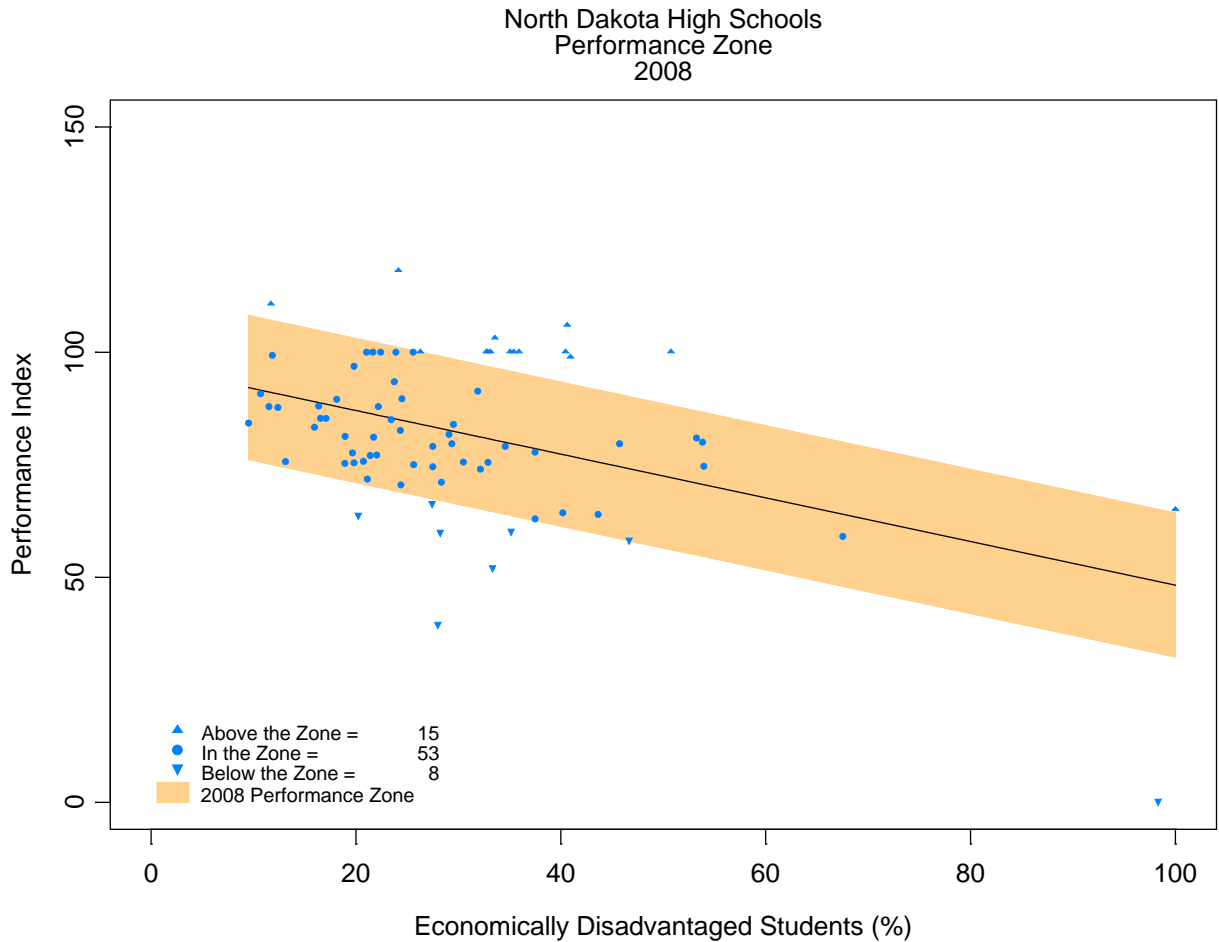
North Carolina

Total number of high schools analyzed statewide	423
Number of schools performing above expectations <i>(i.e., meeting Step 1 criteria*)</i>	49
Percent of schools meeting criteria	11.6%

* Includes one school which did not report its student poverty rate – this school was compared to the y-intercept value required to exceed expectations (i.e., was treated as if it reported zero percent economically disadvantaged students).

North Dakota

Step 1 Analysis: Actual Performance versus Expected Performance
(North Dakota High Schools, 2007-08 School Year)

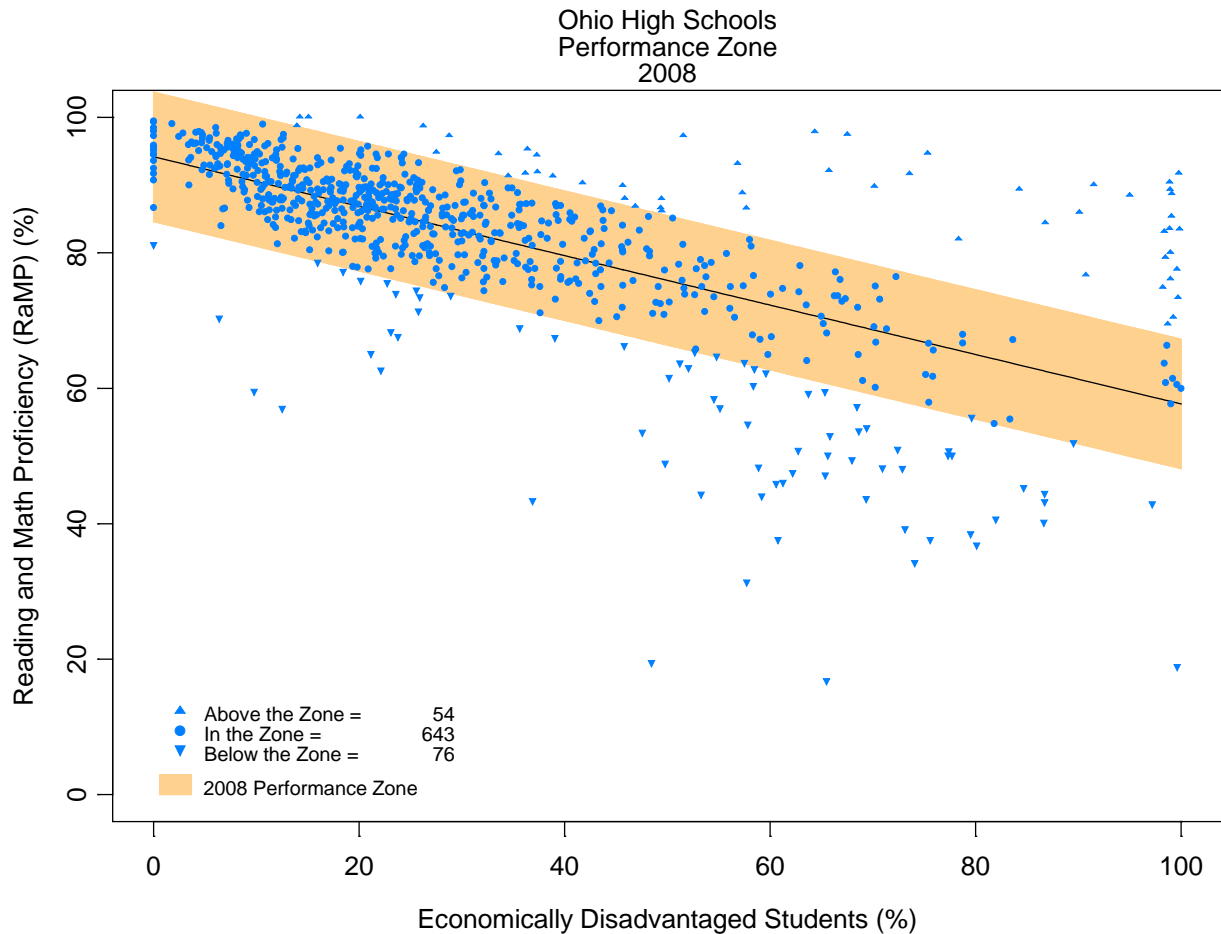


North Dakota

Total number of high schools analyzed statewide	76
Number of schools performing above expectations <i>(i.e., meeting Step 1 criteria)</i>	15
Percent of schools meeting criteria	19.7%

Ohio

Step 1 Analysis: Actual Performance versus Expected Performance
(Ohio High Schools, 2007-08 School Year)

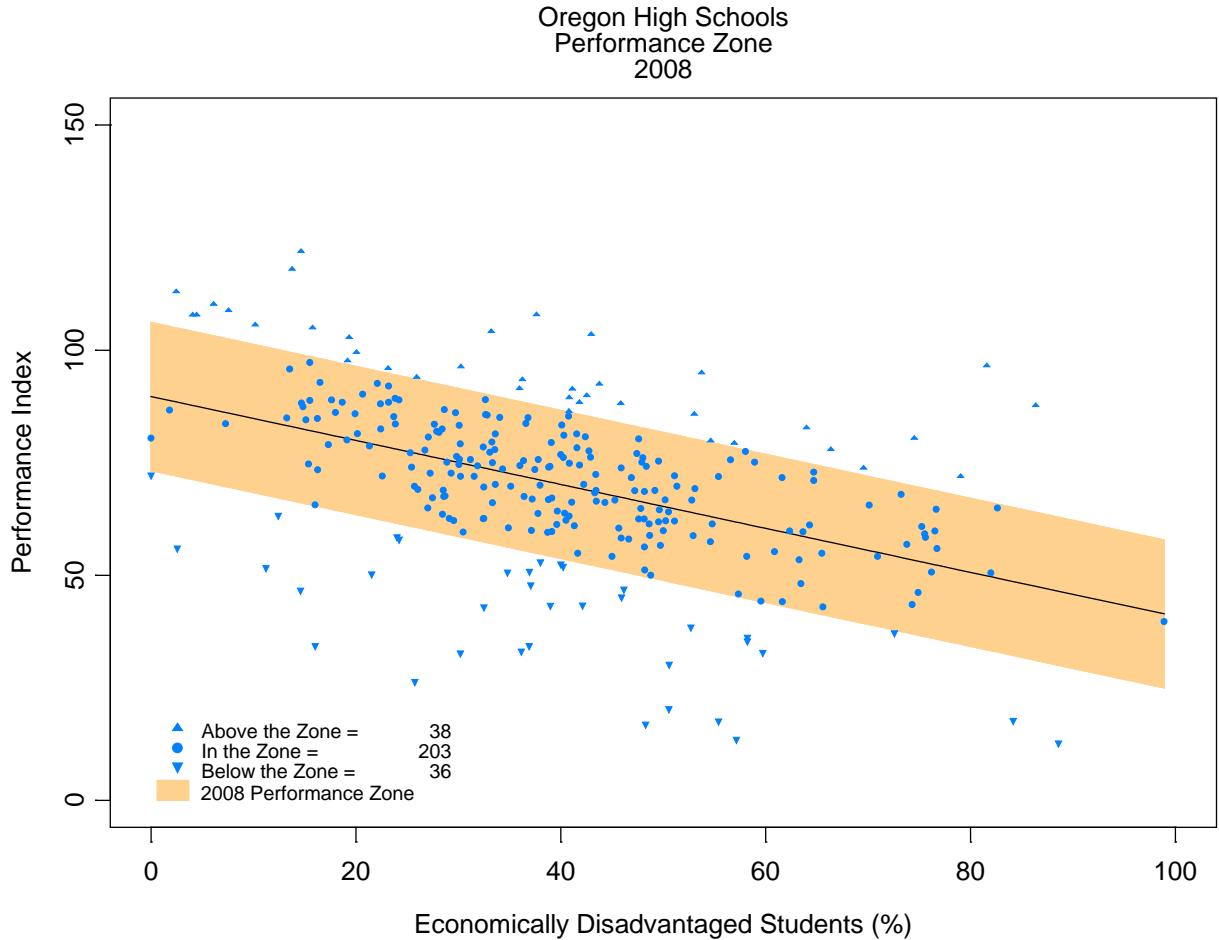


Ohio

Total number of high schools analyzed statewide	773
Number of schools performing above expectations <i>(i.e., meeting Step 1 criteria)</i>	54
Percent of schools meeting criteria	7.0%

Oregon

Step 1 Analysis: Actual Performance versus Expected Performance
(Oregon High Schools, 2007-08 School Year)

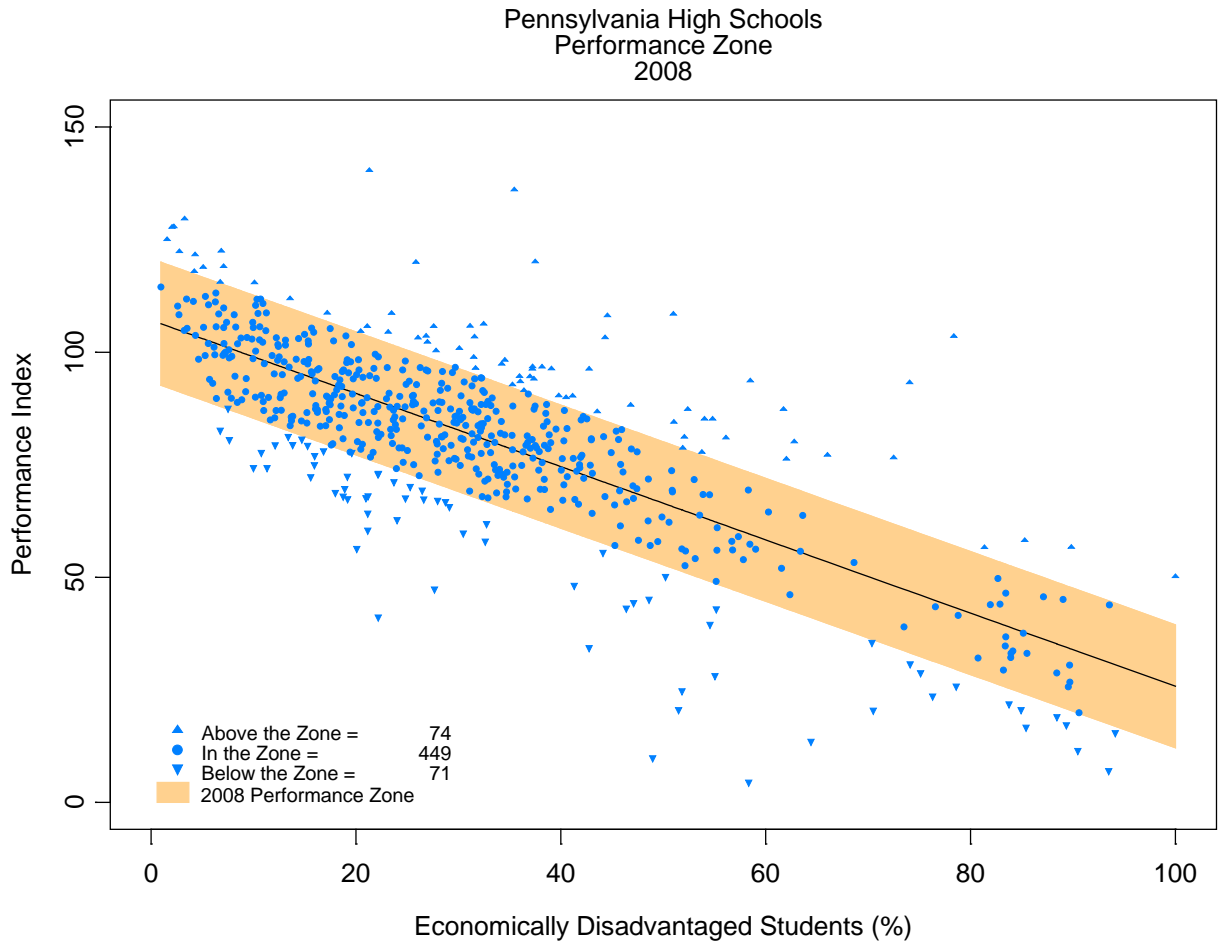


Oregon

Total number of high schools analyzed statewide	277
Number of schools performing above expectations <i>(i.e., meeting Step 1 criteria)</i>	38
Percent of schools meeting criteria	13.7%

Pennsylvania

Step 1 Analysis: Actual Performance versus Expected Performance
(Pennsylvania High Schools, 2007-08 School Year)



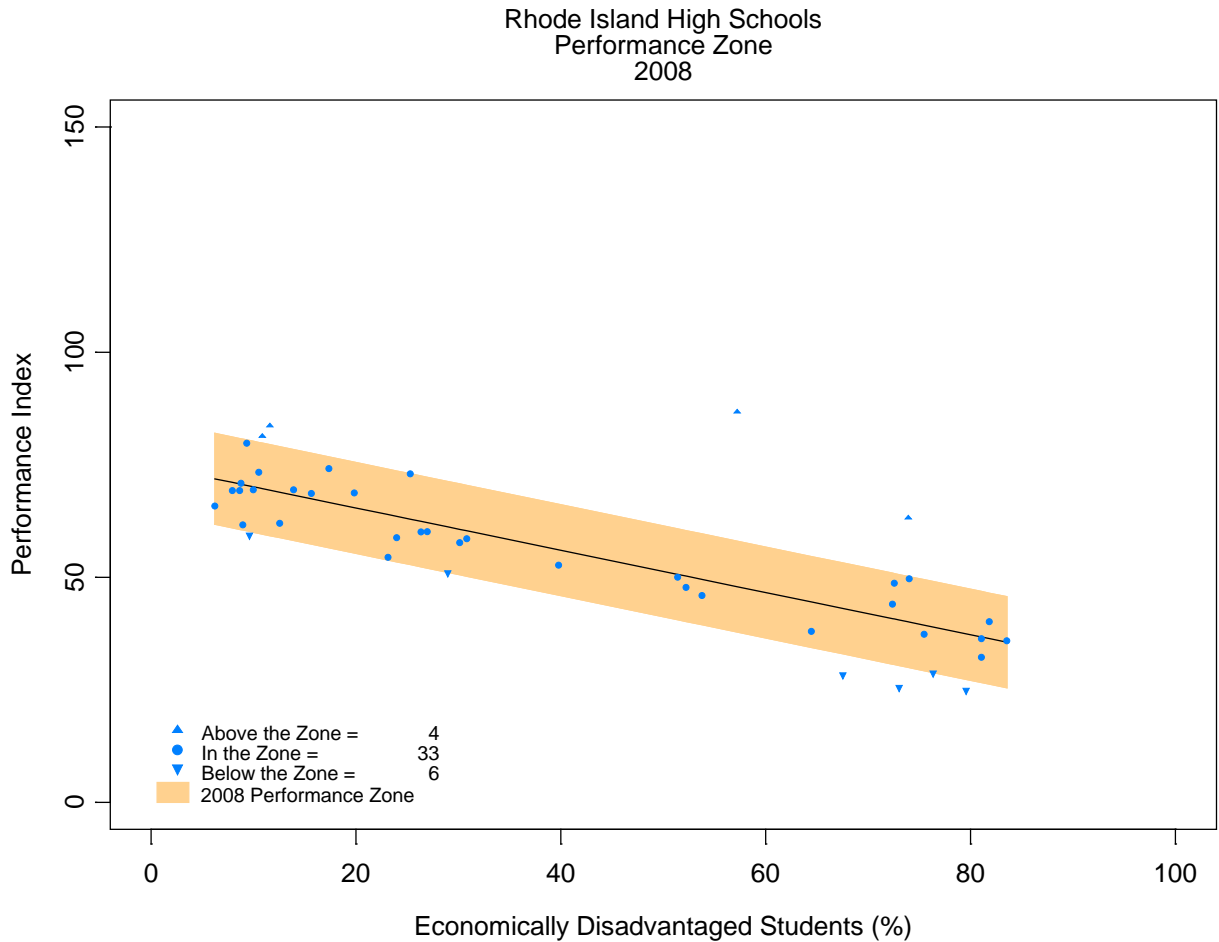
Pennsylvania

Total number of high schools analyzed statewide	595
Number of schools performing above expectations <i>(i.e., meeting Step 1 criteria*)</i>	75
Percent of schools meeting criteria	12.6%

* Includes one school which did not report its student poverty rate – this school was compared to the y-intercept value required to exceed expectations (i.e., was treated as if it reported zero percent economically disadvantaged students).

Rhode Island

Step 1 Analysis: Actual Performance versus Expected Performance
(Rhode Island High Schools, 2007-08 School Year)

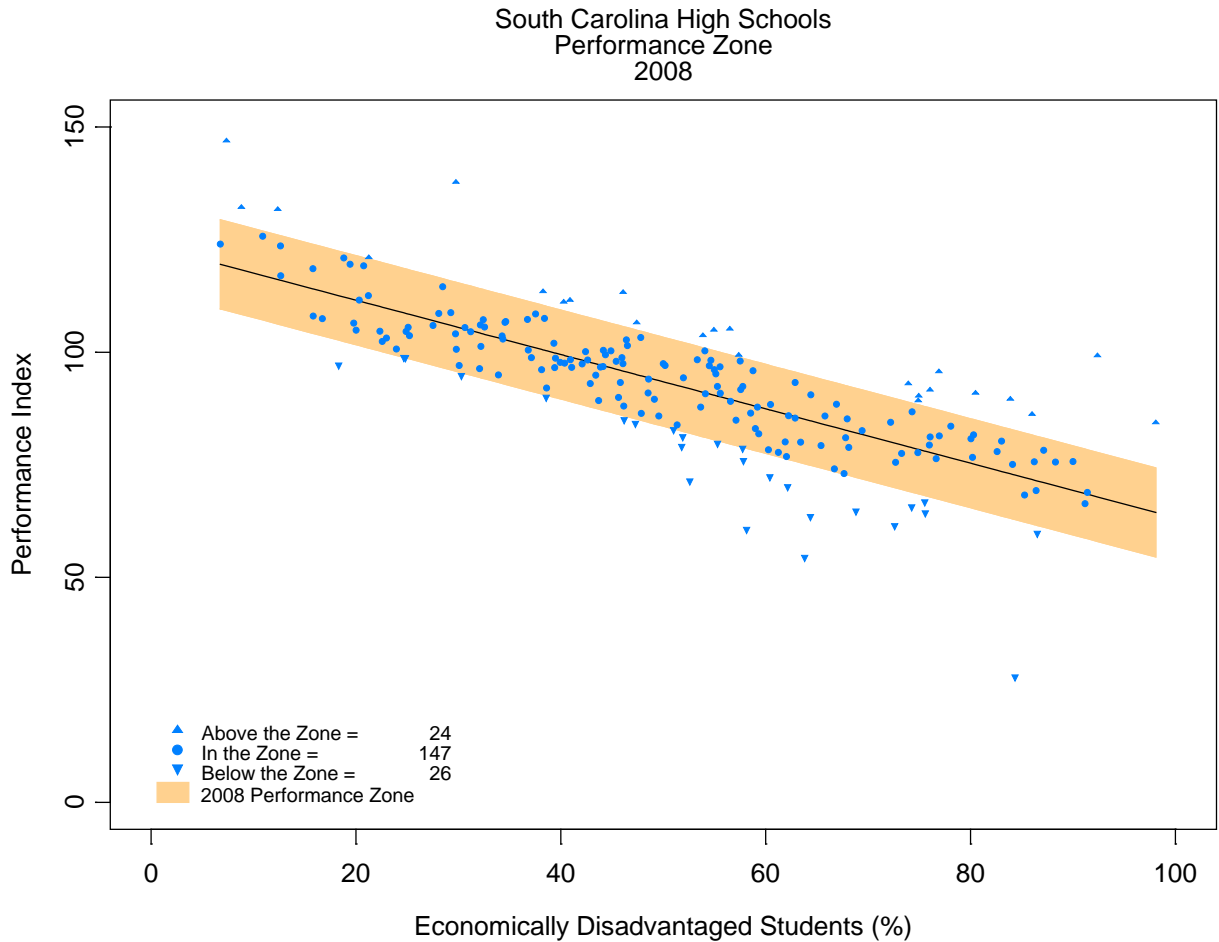


Rhode Island

Total number of high schools analyzed statewide	43
Number of schools performing above expectations <i>(i.e., meeting Step 1 criteria)</i>	4
Percent of schools meeting criteria	9.3%

South Carolina

Step 1 Analysis: Actual Performance versus Expected Performance
(South Carolina High Schools, 2007-08 School Year)

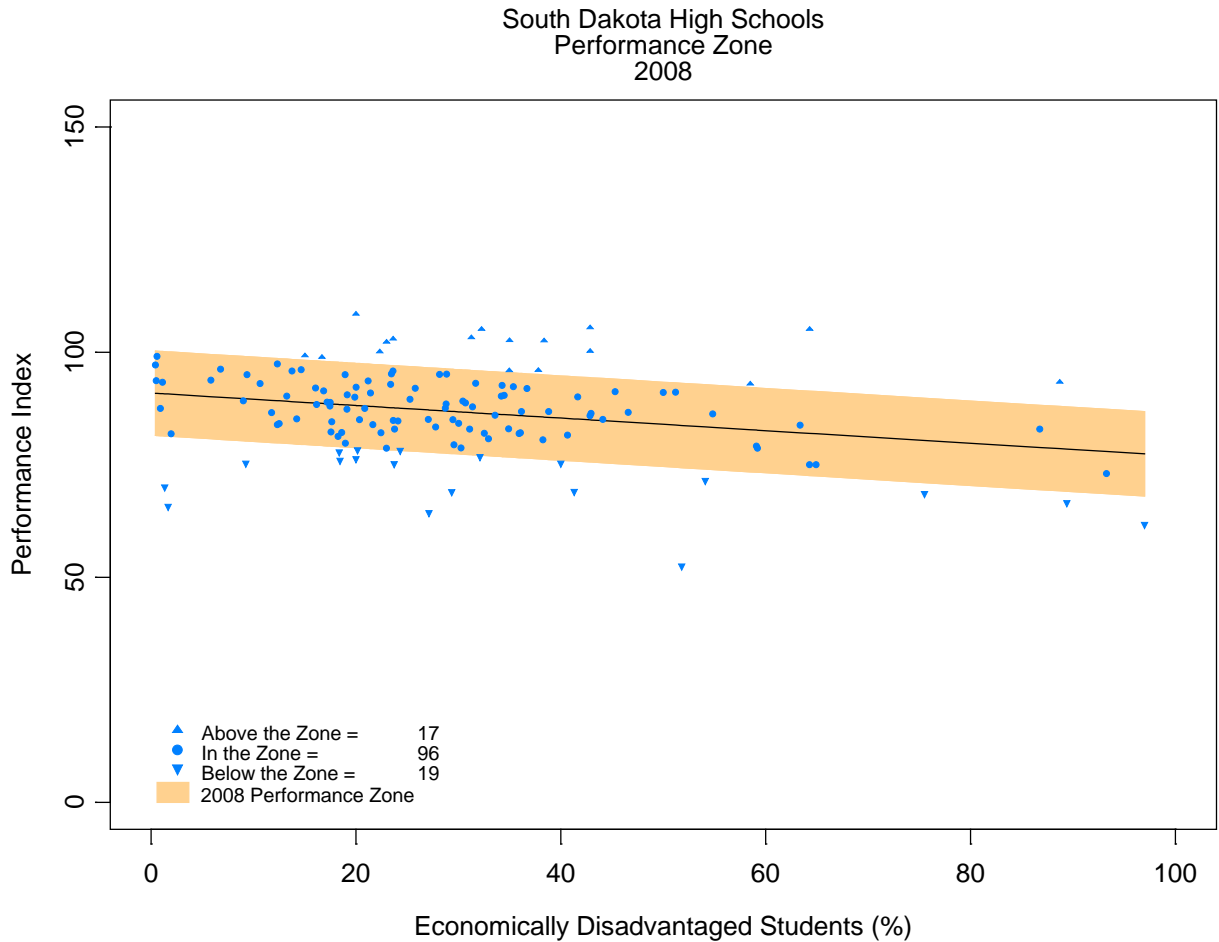


South Carolina

Total number of high schools analyzed statewide	197
Number of schools performing above expectations <i>(i.e., meeting Step 1 criteria)</i>	24
Percent of schools meeting criteria	12.2%

South Dakota

Step 1 Analysis: Actual Performance versus Expected Performance
(South Dakota High Schools, 2007-08 School Year)



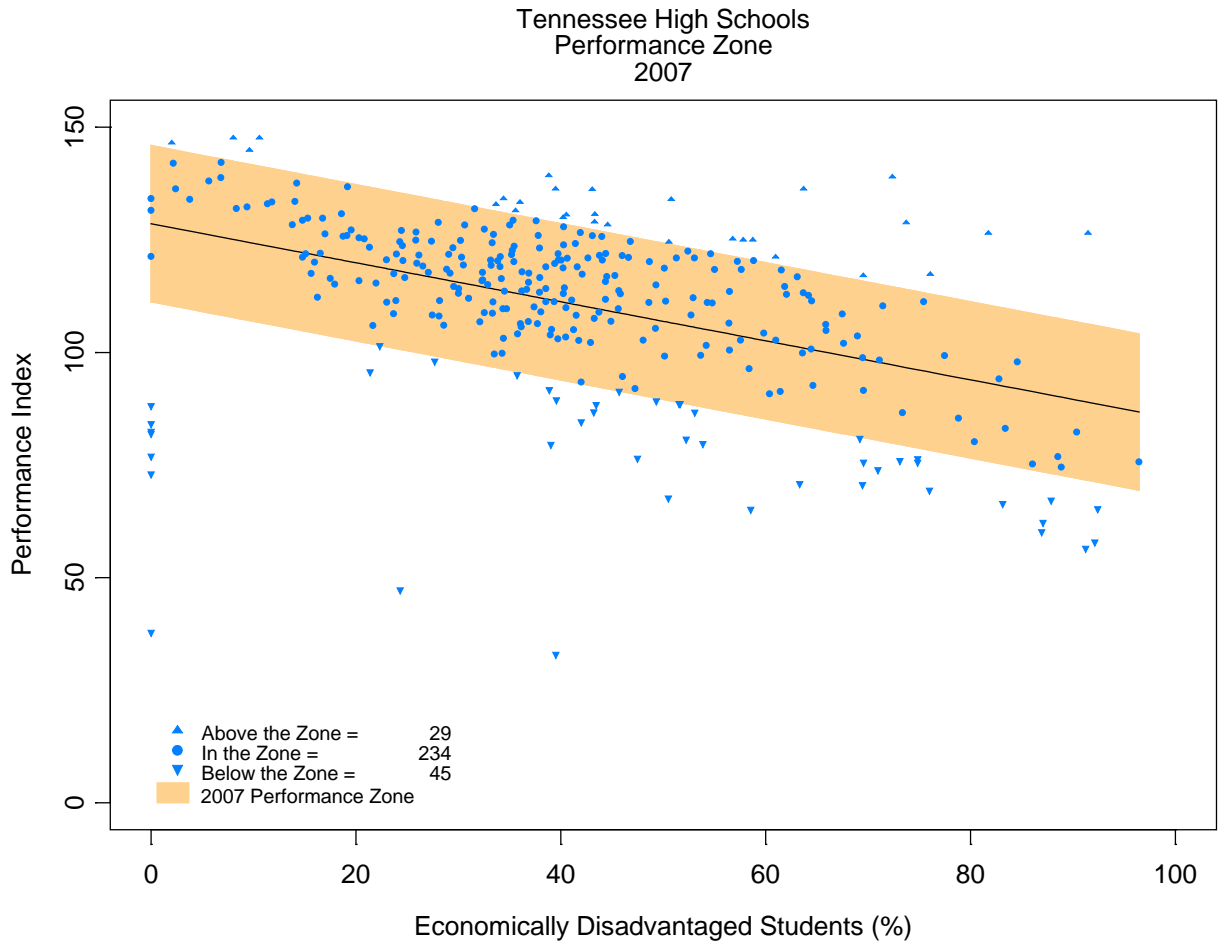
South Dakota

Total number of high schools analyzed statewide	133
Number of schools performing above expectations <i>(i.e., meeting Step 1 criteria *)</i>	18
Percent of schools meeting criteria	13.5%

* Includes one school which did not report its student poverty rate – this school was compared to the y-intercept value required to exceed expectations (i.e., was treated as if it reported zero percent economically disadvantaged students).

Tennessee

Step 1 Analysis: Actual Performance versus Expected Performance
(Tennessee High Schools, 2006-07 School Year[#])

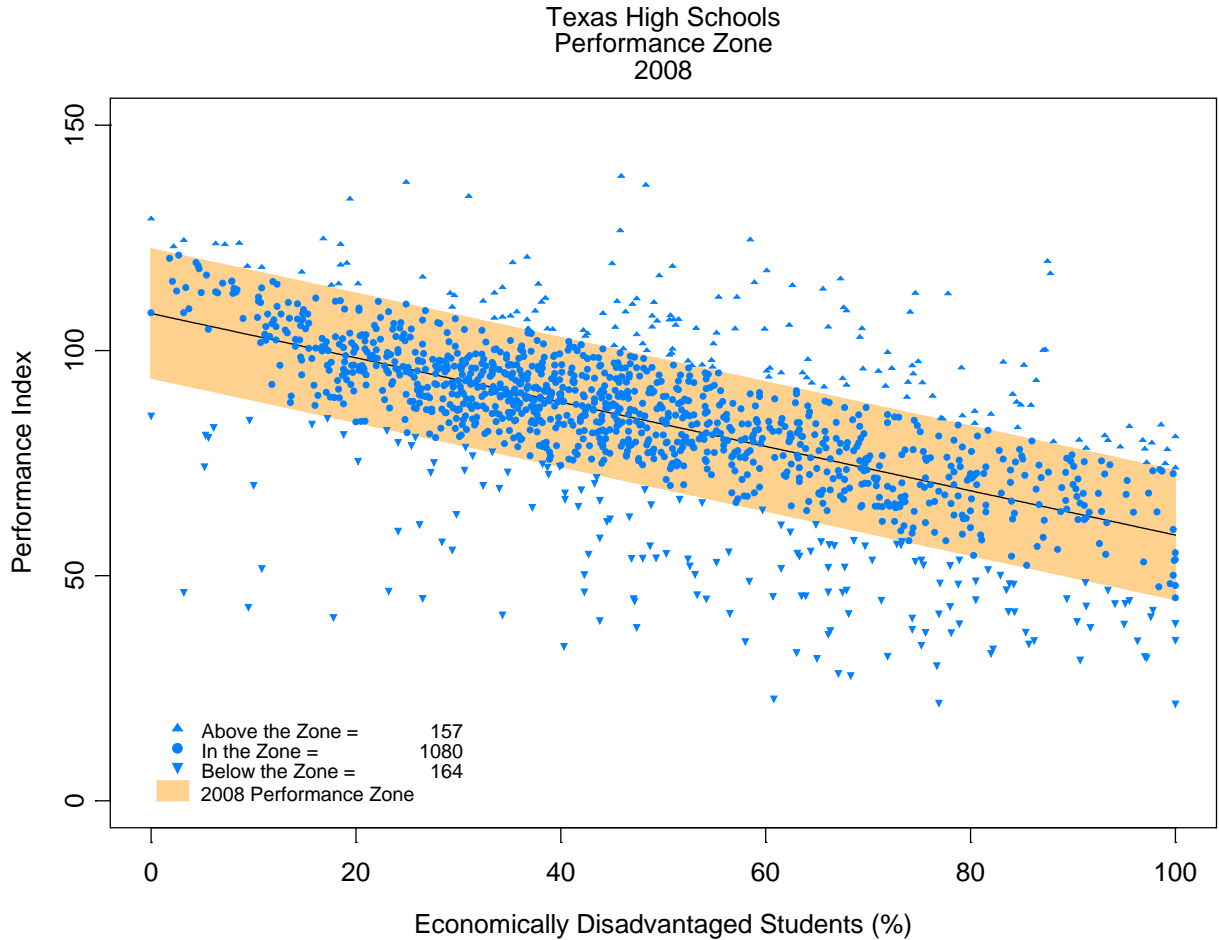


Tennessee

Total number of high schools analyzed statewide	308
Number of schools performing above expectations <i>(i.e., meeting Step 1 criteria)</i>	29
Percent of schools meeting criteria	9.4%

Texas

Step 1 Analysis: Actual Performance versus Expected Performance
(Texas High Schools, 2007-08 School Year)

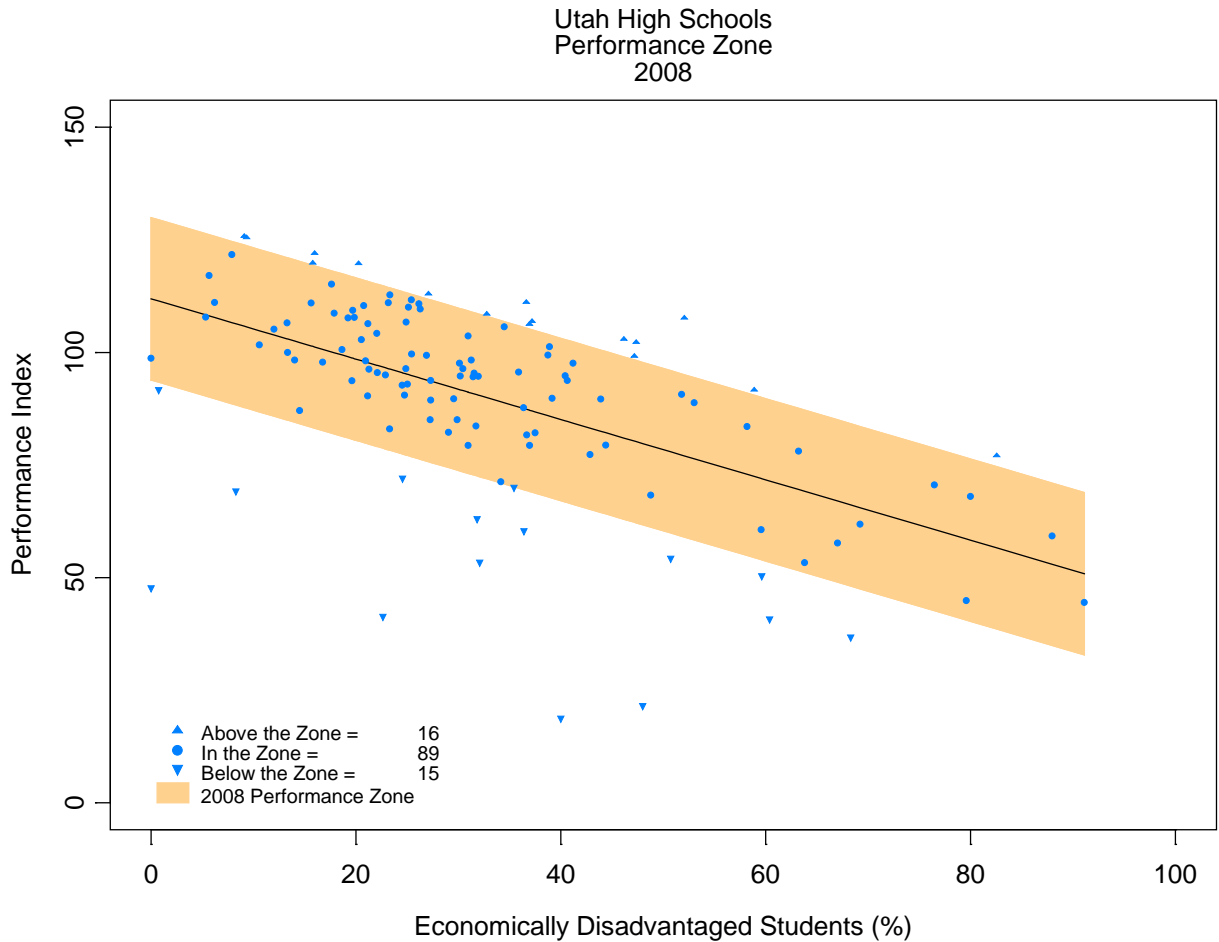


Texas

Total number of high schools analyzed statewide	1,401
Number of schools performing above expectations <i>(i.e., meeting Step 1 criteria)</i>	157
Percent of schools meeting criteria	11.2%

Utah

Step 1 Analysis: Actual Performance versus Expected Performance
(Utah High Schools, 2007-08 School Year)

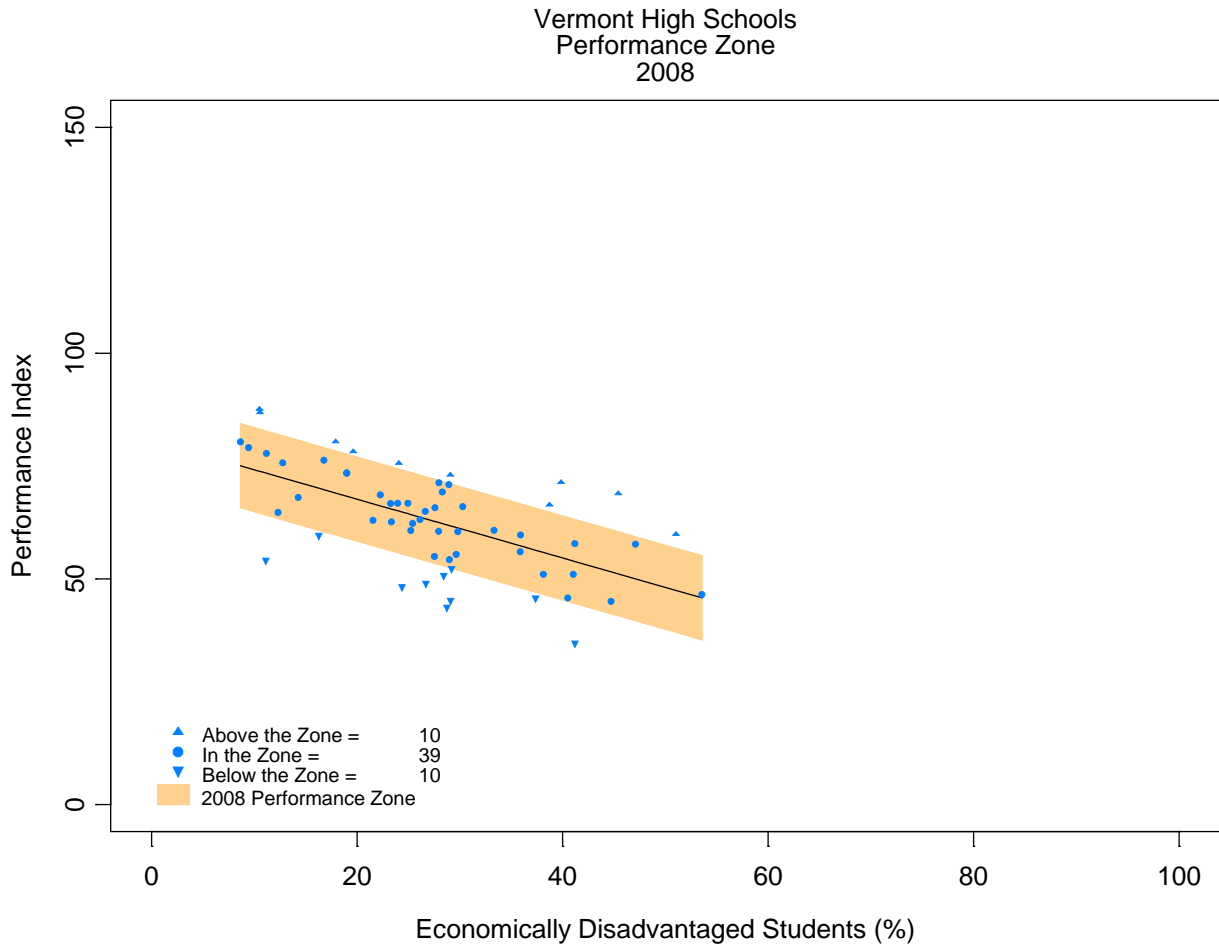


Utah

Total number of high schools analyzed statewide	120
Number of schools performing above expectations <i>(i.e., meeting Step 1 criteria)</i>	16
Percent of schools meeting criteria	13.3%

Vermont

Step 1 Analysis: Actual Performance versus Expected Performance
(Vermont High Schools, 2007-08 School Year)

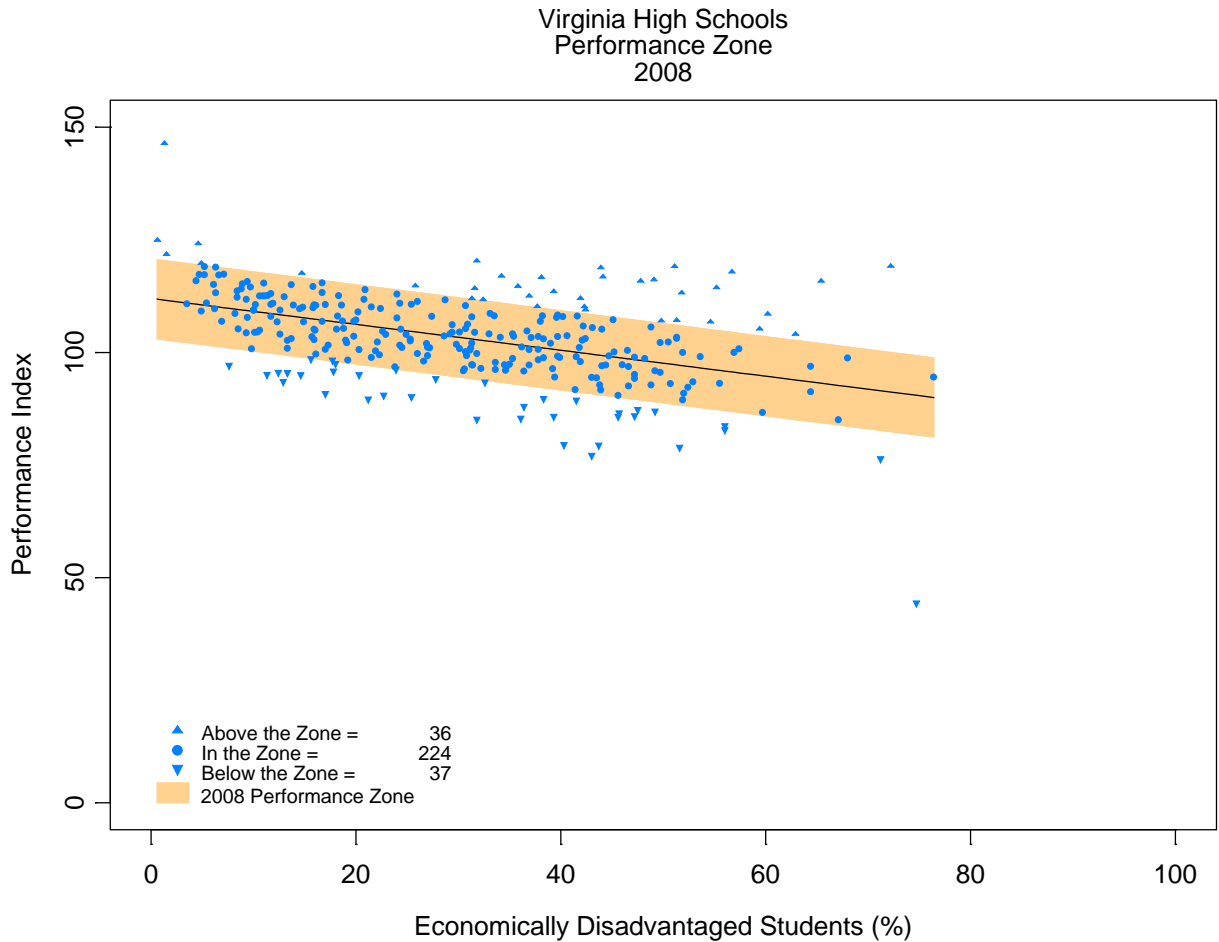


Vermont

Total number of high schools analyzed statewide	59
Number of schools performing above expectations <i>(i.e., meeting Step 1 criteria)</i>	10
Percent of schools meeting criteria	16.9%

Virginia

Step 1 Analysis: Actual Performance versus Expected Performance
(Virginia High Schools, 2007-08 School Year)

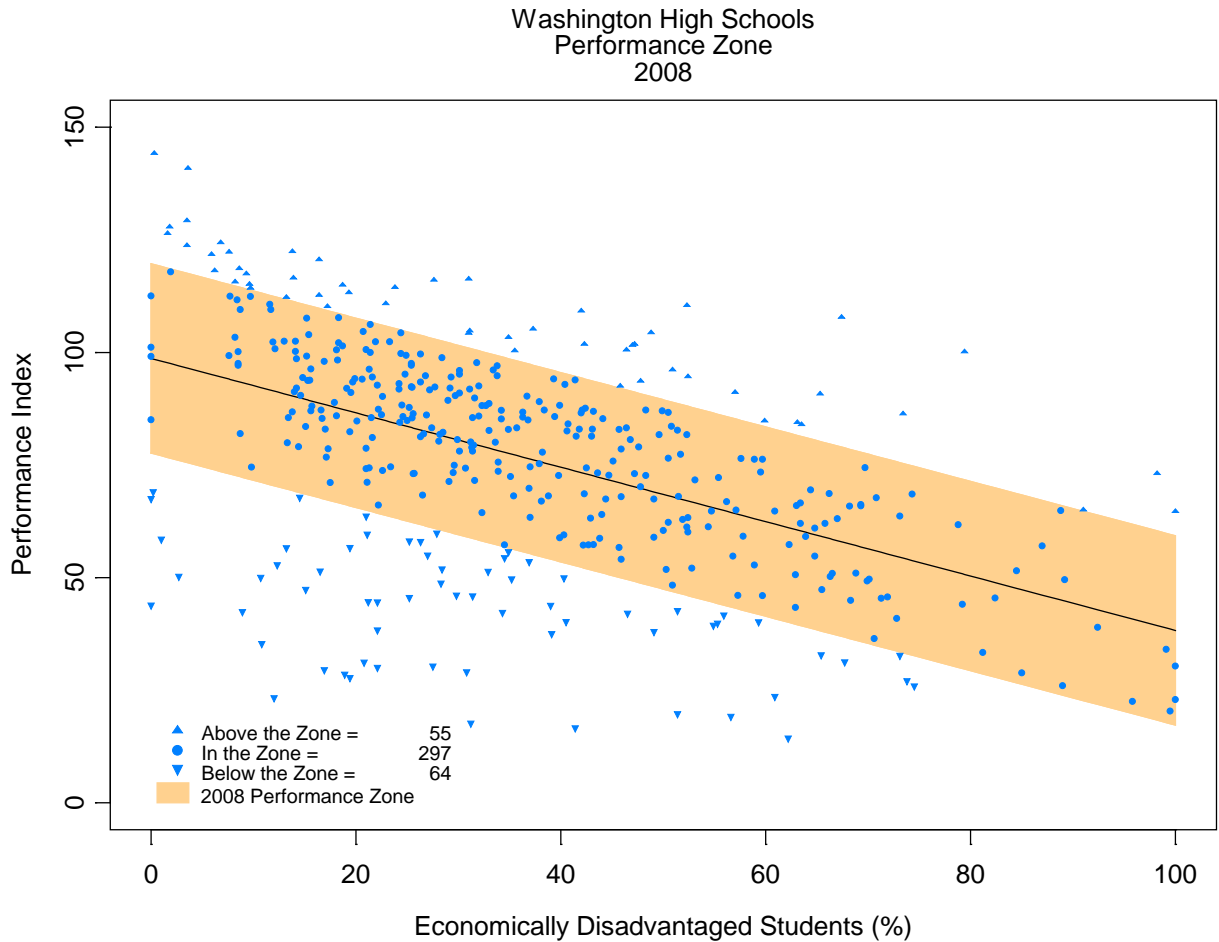


Virginia

Total number of high schools analyzed statewide	297
Number of schools performing above expectations <i>(i.e., meeting Step 1 criteria)</i>	36
Percent of schools meeting criteria	12.1%

Washington

Step 1 Analysis: Actual Performance versus Expected Performance
(Washington High Schools, 2007-08 School Year)

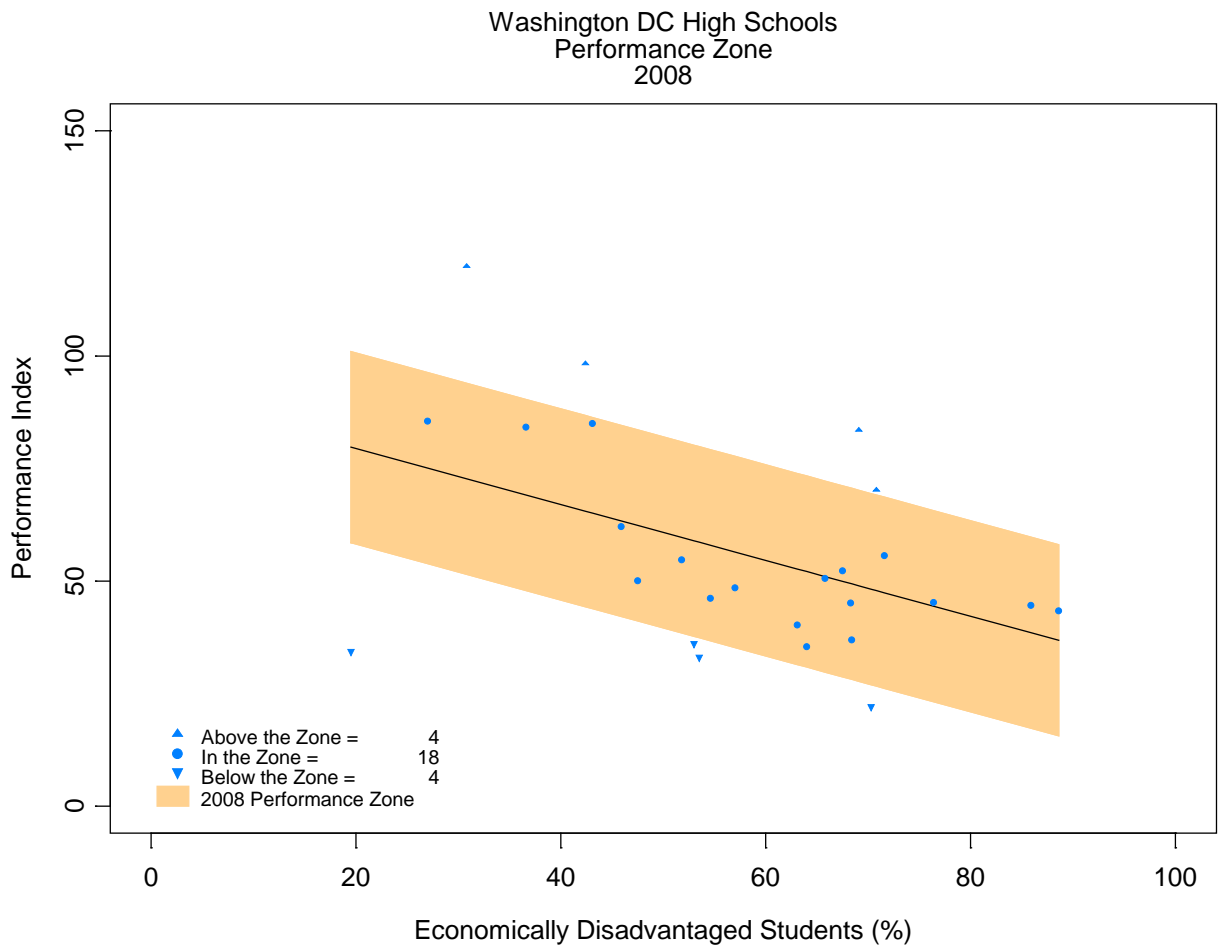


Washington

Total number of high schools analyzed statewide	416
Number of schools performing above expectations <i>(i.e., meeting Step 1 criteria)</i>	55
Percent of schools meeting criteria	13.2%

Washington, D.C.

Step 1 Analysis: Actual Performance versus Expected Performance
(Washington High Schools, 2007-08 School Year)

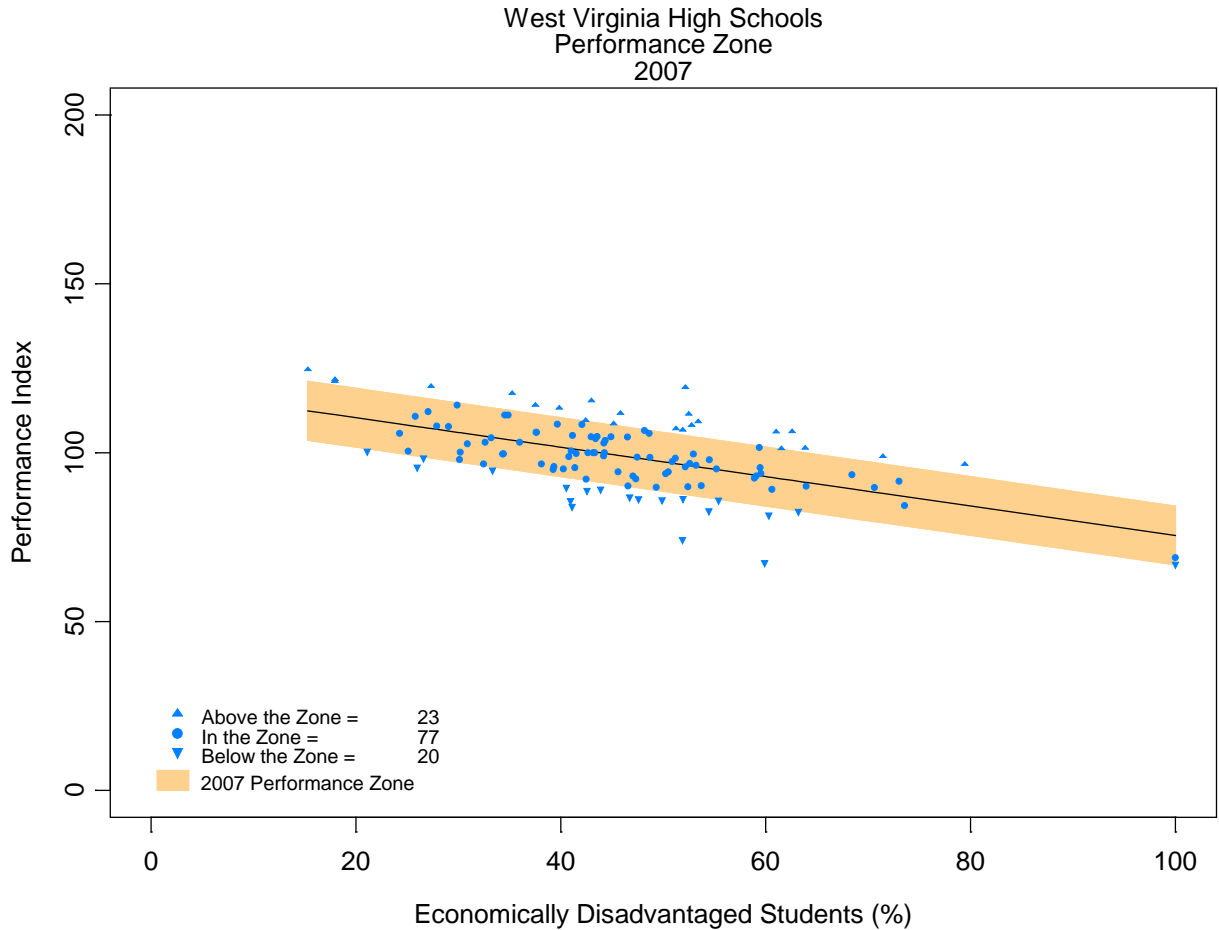


Washington, D.C.

Total number of high schools analyzed statewide	26
Number of schools performing above expectations <i>(i.e., meeting Step 1 criteria)</i>	4
Percent of schools meeting criteria	15.4%

West Virginia

Step 1 Analysis: Actual Performance versus Expected Performance
(West Virginia High Schools, 2006-07 School Year[#])

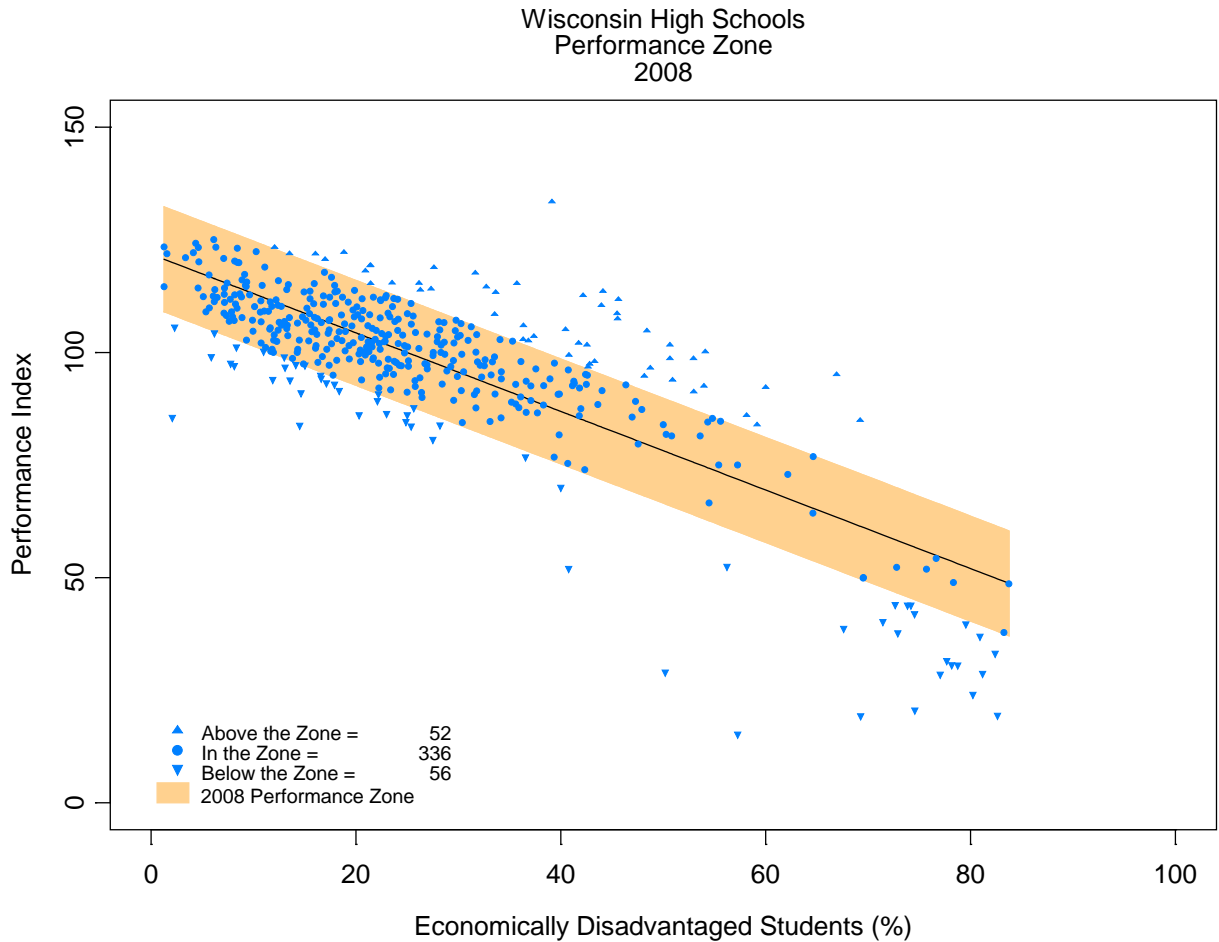


West Virginia

Total number of high schools analyzed statewide	120
Number of schools performing above expectations <i>(i.e., meeting Step 1 criteria)</i>	23
Percent of schools meeting criteria	19.2%

Wisconsin

Step 1 Analysis: Actual Performance versus Expected Performance
(Wisconsin High Schools, 2007-08 School Year)

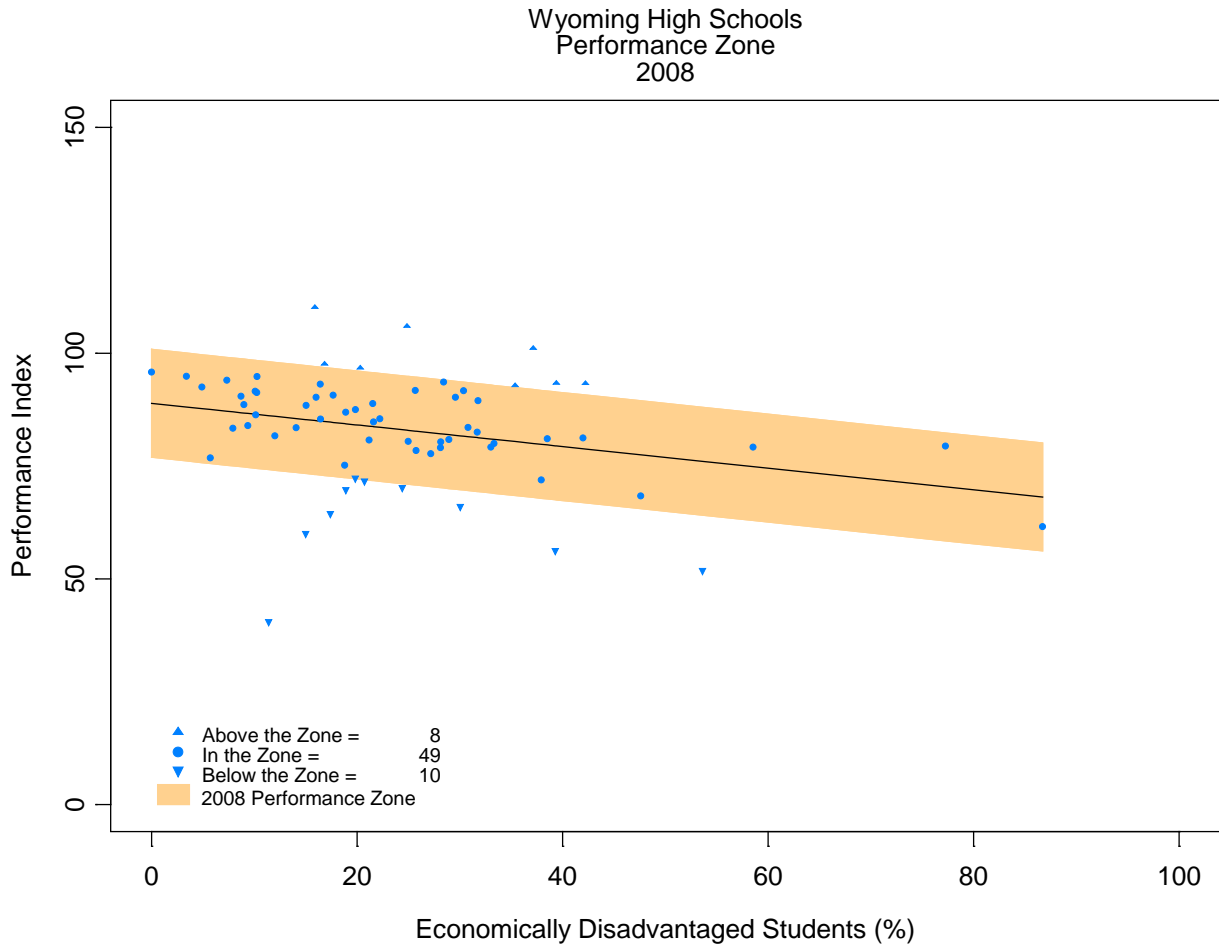


Wisconsin

Total number of high schools analyzed statewide	444
Number of schools performing above expectations <i>(i.e., meeting Step 1 criteria)</i>	52
Percent of schools meeting criteria	11.7%

Wyoming

Step 1 Analysis: Actual Performance versus Expected Performance
(Wyoming High Schools, 2007-08 School Year)



Wyoming

Total number of high schools analyzed statewide	67
Number of schools performing above expectations <i>(i.e., meeting Step 1 criteria)</i>	8
Percent of schools meeting criteria	11.9%